



Inverell Shire Council

Venue Guide

A guide to community halls & venues for hire in Inverell Shire

Introduction

Inverell Shire has more than 25 community owned and volunteer run halls and venues available for hire. This guide outlines venues across the shire, including features, hire rates and contact details. Please contact the venue for further information.

Information contained in this guide is correct at time of publication. To update venue listings or enquire to have a volunteer-run, non-profit venue included, please contact Inverell Shire Council by telephone (02) 67288288 or email, council@inverell.nsw.gov.au.

Legend

Throughout the Venue Guide, the following icons are used to depict venue features available to hirers. Contact the venue for further information.



Toilets available



Camping available



Free Wi-Fi available



Venue has hearing loop facility



Wheelchair friendly access



Kitchen facilities available



Audio-visual facilities available, eg. data projector, screen, PA system

Version Control

| | |
|----|---------------|
| V1 | October 2021 |
| V2 | November 2021 |
| V3 | February 2022 |
| V4 | January 2023 |
| V5 | January 2024 |
| V6 | January 2025 |

Table of Contents

| | | |
|--------------------|---|----|
| ASHFORD | Ashford Bowling Club | 4 |
| BONSHAW | Bonshaw Memorial Hall | 4 |
| BUKKULLA | Bukkulla Hall | 5 |
| COPETON DAM | Copeton Northern Foreshores Communal Hall | 5 |
| DELUNGRA | Delungra Memorial Bowling & Recreation Club | 6 |
| | Delungra Multipurpose Hall | 6 |
| ELSMORE | Elsmore Soldiers Memorial Hall | 7 |
| GILGAI | Gilgai Hall | 7 |
| GRAMAN | Graman War Memorial Hall | 8 |
| GUM FLAT | Gum Flat Hall | 8 |
| INVERELL | Inverell Golf Club | 9 |
| | Inverell Guide Hall | 9 |
| | Inverell Jockey Club | 10 |
| | Inverell Pioneer Village | 10 |
| | Inverell Rugby Clubhouse | 11 |
| | Inverell Scottish Pipe Band Hall | 13 |
| | Inverell Tennis Clubhouse | 11 |
| | Inverell Town Hall | 12 |
| | Inverell Town Hall Annex | 12 |
| | Inverell Uniting Church Hall | 13 |
| | Scout Hall | 15 |
| | The Inverell Club | 16 |
| MYALL CREEK | Myall Creek Public Hall & Recreation Reserve | 14 |
| NULLAMANNA | Nullamanna Public Hall & Recreational Reserve | 14 |
| TINGHA | Tingha Town Hall | 15 |
| WALLANGRA | Wallangra & District Memorial Hall | 16 |
| YETMAN | Yetman Memorial Hall | 1 |

Ashford Bowling Club



Large hall with raised stage area, downstairs supper room and renovated kitchen. Serving the township of Ashford since 1959, the Ashford Bowling Club's function hall is considered as the centre of entertainment within the Ashford Community.

| | |
|-------------------------|-----------------------------------|
| Address | 29 Bala Street, Ashford 2361 |
| Visitor capacity | 200 |
| Floor space | 400m ² |
| Hire fee | Negotiable – contact venue |
| Contact details | Malcolm Allen Ph: 6725 4202 |
| Email | office@ashfordbowling.club.com.au |
| Website | www.ashfordbowlingclub.com.au |
| Air conditioning | ✓ |
| Heating | ✓ |



Bonshaw Memorial Hall



Large hall with raised stage area, downstairs supper room and renovated kitchen.

| | |
|-------------------------|---|
| Address | 2 Miller Street, Bonshaw 2361 |
| Visitor capacity | 130+ |
| Floor space | 15m x 12m (hall) |
| Hire fee | \$100/day hire; \$50 hire for short hire; No hire fee applicable for non-profit organisations |
| Contact details | Michelle Ramsay Ph: 0438 801 020 |
| Email | ramsays@bonshaw.com |
| Air conditioning | ✓ |
| Heating | ✓ |
| | Chairs and tables for hire: \$10 per table; \$1 per chair. |



Bukkulla Hall



The hall can hold gatherings, meetings, community events and private events. It is situated on a recreation ground which makes it perfect for hosting camp drafts, horse sports, cricket, car rallies and local meeting groups.

| | |
|-------------------------|---|
| Address | Red Hill Lane, Bukkulla 2360 |
| Postal address | As above |
| Visitor capacity | 150+ |
| Hire fee | \$50-\$100 / day or night + camping fees (if applicable) |
| Contact details | Kirsty Wall Ph: 0408 826 620 Spike Wall Ph: 0459 255 677 |
| Air conditioning | ✗ |
| Heating | ✓ |



Copeton Northern Foreshores Communal Hall



Constructed in 2021, the hall has panoramic views of Copeton Dam. Hire is available for the conduct of meetings, conferences, weddings, functions and other events as approved by Council.

Strictly no 18th or 21st birthday parties. Bookings will be reviewed by Council on a case-by-case basis.

Venue is not available Christmas Day, Boxing Day, Easter, New Year's Day or New Year's Eve.

| | |
|-------------------------|---|
| Address | 1873 Auburn Vale Road, Copeton 2360 |
| Visitor capacity | 100 |
| Floor space | 400m ² |
| Hire fee | \$500 bond \$200/event- hall only \$250/event- hall & kitchen |
| Contact details | Inverell Shire Council Ph: 6728 8221 |
| Email | council@inverell.nsw.gov.au |
| Website | www.inverell.nsw.gov.au |
| Air conditioning | ✗ |
| Heating | ✓ (Open wood fire) |
| | 100 x chairs & 12 x tables available for use. BYO cutlery, glassware, crockery & wood for the fireplace. |



Delungra Memorial Bowling and Recreation Club



Photo: Facebook

Bowling club with bar & function/dining room available for hire. Modern, recently renovated kitchen also available.

| | |
|----------------------------------|-----------------------------------|
| Address | 30 Inverell Street, Delungra 2403 |
| Visitor capacity | 100 |
| Internal seating capacity | 80 |
| Hire fee | \$100 non-members \$50 members |
| Contact | Leah Bennett |
| Email | admin@dmbc.com.au |
| Website | www.dmbc.com.au |
| Air conditioning | ✓ |
| Heating | ✓ |



Delungra Multipurpose Hall



Large hall with a kitchen, 2 squash courts and a basketball court. Fenced playground is located next door to hall.

| | |
|----------------------------------|--|
| Address | Railway Street, Delungra 2403 |
| Visitor capacity | 300 |
| Internal seating capacity | 200 |
| Floor space | 540m ² (18m x30m) |
| Hire fee | \$6/ hr - squash courts \$100 - hall only \$125 - hall and kitchen for functions |
| Contact details | Glenis Charter Ph: 6724 8257 |
| Air conditioning | ✗ |
| Heating | ✗ |
| | Hall also has a stage. AV facilities: Audio only. |



Elsmore Soldiers Memorial Hall

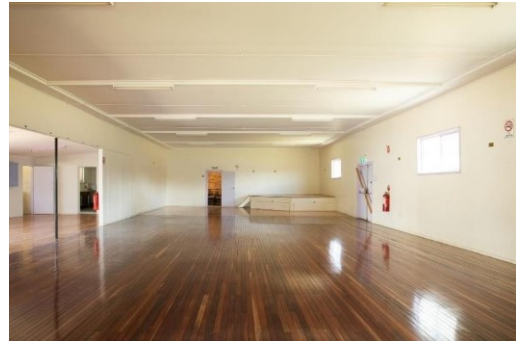


Main hall with stage, bench seating along walls, fully lined with separate supper room and kitchen. Playground equipment with shade sails also on site.

| | |
|----------------------------------|--|
| Address | 1181 Elsmore Road, Elsmore 2360 |
| Visitor capacity | 180 |
| Internal seating capacity | Please contact for details |
| Floor space | 160m2 main hall 53m2 supper room and kitchen |
| Hire fee | Hall hire \$100 + \$50 Bond Supper room hire \$40 + \$40 Bond Meetings \$10 |
| Contact details | Wayne McKinnon Ph: 6723 2250 Ross Murray Ph: 0427 850 492 |
| Air conditioning | ✗ |
| Heating | ✓ |
| | Ceiling fans in main hall and supper room. |



Gilgai Hall



The recently renovated Gilgai Hall has been painted with newly polished floorboards, stage and lectern, tables and chairs, new toilets and showers, a brand-new kitchen equipped with ovens, stoves, microwaves, fridge, large stainless-steel food preparation bench and urn.

| | |
|----------------------------------|--|
| Visitor capacity | 100 |
| Internal seating capacity | 100 |
| Floor space | 250m2 |
| Hire fee | Starting from \$250, plus \$300 refundable deposit |
| Contact details | Garry Ph: 0486 012 589 Cristina Ph: 0408 265 101 |
| Email | gilgaicrownland@gmail.com |
| Air conditioning | ✗ |
| Heating | ✗ |
| | Premises also include a small meeting room, large sporting oval, external undercover BBQ area, ample parking and a disability accessible toilet. |



Graman War Memorial Hall



Photo: War Memorials Register

Large community hall in Graman which was refurbished in 2021.

| | |
|----------------------------------|--|
| Address | 4 Ashford Road, Graman 2360 |
| Visitor capacity | 200 inside 500 outside |
| Internal seating capacity | 200 |
| Hire fee | \$100/function Meeting hire fees negotiable |
| Contact details | Lois Reardon Ph: 0447 256 411 Ph: 02 6725 4649 |
| Email | reardonla@skymesh.com.au |
| Air conditioning | ✓ Supper room only |
| Heating | ✓ |
| | Enclosed play area for children. |



Gum Flat Hall



Charming & rustic venue for the perfect country wedding. Located 15 minutes from Inverell on a sealed road. Outdoor space large enough for a marquee.

| | |
|----------------------------------|---|
| Address | 956 Copeton Dam Road, Gum Flat 2360 |
| Visitor capacity | 250 |
| Internal seating capacity | 100 |
| Floor space | 132m2 |
| Hire fee | \$500 for weddings Contact for other hire rates |
| Contact details | Penny Hackney Ph: 0427 949 953 |
| Email | gumflatlandmanagers@yahoo.com |
| Air conditioning | ✗ |
| Heating | ✗ |
| | Cooking facilities: BBQ and microwave only. No stove. |



Inverell Golf Club



Golf Club offering a picturesque venue for Weddings, Parties, Seminars & Recreational Groups.

| | |
|----------------------------------|--|
| Address | 4078 Bundarra Road, Inverell 2360 |
| Visitor capacity | 300 |
| Internal seating capacity | 200 |
| Floor space | 20m2 |
| Hire fee | Priced on Application, depending on the type of event. |
| Contact details | Adrian King Ph: 02 6722 1574 |
| Email | manager@inverellgolfclub.com |
| Air conditioning | ✓ |
| Heating | ✓ |
| | Open Fireplace in Winter & Ceiling Fans in Summer. |



Inverell Guide Hall



Medium weatherboard building with fenced yard and toilet/shower facilities. Stove, microwave & urn available for use.

| | |
|----------------------------------|-----------------------------------|
| Address | 63 Campbell Street, Inverell 2360 |
| Visitor capacity | 50 |
| Internal seating capacity | 50 |
| Floor space | 80m2 |
| Hire fee | \$45/day \$70/day + night |
| Contact details | Beth Hamilton Ph: 0428 224 118 |
| Email | bhamilton10760@hotmail.com |
| Air conditioning | ✗ |
| Heating | ✗ |



Inverell Jockey Club



Racecourse with trainer facilities as well as offering venue/function hire.

| | |
|----------------------------------|---|
| Address | Cameron Street, Inverell 2360 |
| Visitor capacity | 4,500 |
| Internal seating capacity | 60 indoors 300 outdoors |
| Floor space | 525m2 |
| Hire fee | Contact Club for details. |
| Contact details | Secretary: Karen Fontaine Ph: 0403 403 004 |
| Email | info@inverelljockeyclub.com |
| Website | www.inverelljockeyclub.com |
| Air conditioning | ✓ |
| Heating | ✓ |
| | Onsite catering available |



Inverell Pioneer Village



Inverell Pioneer Village is a volunteer run facility with a range of options for hire. This includes an under-cover barbecue area, hall, church and outdoor areas for ceremonies and / or photography.

| | |
|-------------------------|---|
| Address | 64 Tingha Road, Inverell 2360 |
| Contact | Ph: 0477 217 179 or 6722 1717 |
| Email | info@inverellpioneervillage.org.au inverellpioneervillage@outlook.com |
| Website | www.inverellpioneervillage.org.au |
| Air conditioning | ✗ |
| Heating | ✗ |
| | Many options available for hire. Please contact the Inverell Pioneer Village for information and costs. |



Inverell Rugby Clubhouse



Photo: Supplied

Mostly carpeted floor, bar facility, kitchen, PA system with portable microphone, tables & chairs, day & night hire, external enclosed playground.

See website for further details.

| | |
|----------------------------------|--------------------------------|
| Address | 100 Ross Street, Inverell 2360 |
| Visitor capacity | Various spaces available |
| Internal seating capacity | Various spaces available |
| Floor space | Contact club for details |
| Hire fee | Contact club for details |
| Email | inverellrugbyclub@outlook.com |
| Website | www.inverellhighlanders.com |
| Air conditioning | ✓ |
| Heating | ✓ |



Inverell Tennis Clubhouse



We are a tennis sporting organisation providing skill-based weekly competitions to the Inverell area. Hire of the recently refurbished Clubhouse is only available for corporate bookings. Please contact the club for hire details.

| | |
|----------------------------------|-------------------------------------|
| Address | 115 Evans Street, Inverell 2360 |
| Visitor capacity | Contact club for details |
| Internal seating capacity | Contact club for details |
| Floor space | Contact club for details |
| Hire fee | Contact club for details |
| Contact details | Joshua Power Ph: 0429 202 160 |
| Email | secretary@inverelltennisclub.org.au |
| Website | www.inverelltennisclub.org.au |
| Air conditioning | ✓ |
| Heating | ✓ |



Inverell Town Hall



Inverell's premier cultural and performance theatre and venue. Available for hire for cultural events, performances, meetings and conferences. Tiered retractable seating, bar and commercial kitchen.

| | |
|----------------------------------|--|
| Address | Cnr Evans & Otho Streets, Inverell 2360 |
| Visitor capacity | 502 with Annex |
| Internal seating capacity | 432 |
| Floor space | Multiple spaces available, contact Council for details |
| Hire fee | Starting from \$350 |
| Contact details | Inverell Shire Council Ph: 6728 8221 |
| Email | Council@inverell.nsw.gov.au |
| Website | www.inverell.nsw.gov.au |
| Air conditioning | ✓ |
| Heating | ✓ |
| | Crockery & cutlery available. |
| | Not available for private functions. |



Inverell Town Hall Annex



Refurbished in 2020, the Annex is attached to the main hall, Inverell's premier cultural and performance theatre and venue. Available for hire for cultural events, performances, meetings and conferences.

| | |
|----------------------------------|---|
| Address | Cnr Evans & Otho Streets, Inverell 2360 |
| Visitor capacity | 40 |
| Internal seating capacity | 40 |
| Floor space | 8m x 12m |
| Hire fee | \$150 minimum |
| Contact details | Inverell Shire Council Ph: 6728 8221 |
| Email | Council@inverell.nsw.gov.au |
| Website | www.inverell.nsw.gov.au |
| Air conditioning | ✓ |
| Heating | ✓ |



Inverell Uniting Church Hall



A community hall which is available for hire for suitable activities. Please note that church activities take precedence, which can sometimes be held at shortnotice.

| | |
|-------------------------|--|
| Address | 22 Rivers Street, Inverell 2360 |
| Visitor capacity | 70 |
| Floor space | 138m2 |
| Hire fee | \$100/day hire Negotiable for funerals |
| Contact details | Mrs Jacki Watts Ph: 0427 672 241 |
| Email | wattil1946@hotmail.com |
| Air conditioning | ✓ |
| Heating | ✓ |
| | 2 Disability accessible parks available at venue. Rest of parking on street. |



Inverell Scottish Pipe Band Hall



The main hall has a polished timber floor. The kitchen has a vinyl floor and is equipped with stainless steel benchtops, oven, electrical hotplate, and a fridge (no freezer). Tables and chairs are available for use in the hall, as well as a piano.

| | |
|----------------------------------|--|
| Address | 64 Ring Street, Inverell 2360 |
| Visitor capacity | 110 |
| Internal seating capacity | 80 |
| Floor space | 78m2 hall plus 18m2 kitchen |
| Hire fee | \$100/day plus electricity |
| Contact details | Mrs Chris McIntyre Ph: 6722 1205 |
| Email | inverellpipeband@gmail.com |
| Air conditioning | ✓ |
| Heating | ✓ |
| | Hirer must have own insurance. No smoking, no alcohol. Restricted parking- 15 parks on block with overflow on Ring St. |



Myall Creek Public Hall & Recreation Reserve



Photo: War Memorials Register

A well-maintained public hall consisting of a main room with stage, also kitchen and supper room. The reserve also has 2 tennis courts and a cricket field.

| | |
|----------------------------------|---|
| Address | 1 Reserve Creek Road, Myall Creek 2403 |
| Visitor capacity | 300-400 |
| Internal seating capacity | Main room: 80+ Supper room: 40+ |
| Floor space | Main room: 100m ² Supper room: 55m ² |
| Hire fee | Contact venue for pricing schedule |
| Contact details | Mike Partridge Ph: 6723 6486 Warren Ph: 0427 543 083 |
| Email | jm02partridge@gmail.com |
| Air conditioning | X |
| Heating | |



Nullamanna Public Hall & Recreational Reserve



Photo: Facebook

Nullamanna Public Hall complex is a large multipurpose facility including sports ground and cattle yards. There is an equipped supper room (hot water urn, refrigerator, stove and microwave) situated off the main hall. BBQs and Bain Marie are available. Amenities block includes showers.

| | |
|----------------------------------|--|
| Address | 1307 Nullamanna Road, Nullamanna 2360 |
| Visitor capacity | 300 |
| Internal seating capacity | Tables & Chairs to cater for 96 people. |
| Floor space | Main hall: 9.5m x 15m Stage: 7.5m x 3.2m |
| Hire fee | \$500 bond \$80 / ½ day hall hire \$120/day hall hire \$500/day sportsground hire |
| Contact details | Yvette Crowther Ph: 0408 322 646 |
| Email | nullamannareserve@gmail.com |
| Facebook | Facebook.com/Nullamanna |
| Air conditioning | X |
| Heating | ✓ |



Scout Hall, Inverell



A recently refurbished hall located adjacent to Inverell CBD with a kitchen, toilets and a shower.

| | |
|----------------------------------|--|
| Address | Glen Innes Road, Inverell 2360 |
| Visitor capacity | 40+ |
| Internal seating capacity | 40+ |
| Hire fee | \$100 per day/night \$100 key deposit |
| Contact details | Jon Cox Ph: 0418 463 206 |
| Email | jon.cox@nsw.scouts.com.au |
| Air conditioning | ✓ |
| Heating | ✓ |



Tingha Town Hall



Located in Tingha's main street, this large hall is available for community events and Sorry Business. Hall includes stage area and modern, well equipped kitchen.

| | |
|----------------------------------|---|
| Address | Ruby Street, Tingha 2369 |
| Visitor capacity | 150+ |
| Internal seating capacity | 100+ |
| Hire fee | Contact Inverell Shire Council |
| Contact details | Inverell Shire Council Ph: 6728 8221 |
| Air conditioning | ✗ |
| Heating | ✗ |



The Inverell Club



Purpose built Clubhouse with main function/training room, smaller annex, enclosed covered courtyard and large front verandah.

| | |
|----------------------------------|--|
| Address | 1-3 Evans Street, Inverell 2360 |
| Visitor capacity | 250 |
| Internal seating capacity | 100+ |
| Floor space | Main Function Room – 15.5m x 6.9m Annex – 6m x 5.5m Courtyard – 11.8m x 11.7m |
| Hire fee | \$150 - half day \$200 – full day |
| Contact details | Peter Squires Ph: 0427 100 691 Colleen Ritchie Ph: 0409 603 538 |
| Email | inverellclub@gmail.com |
| Air conditioning | ✓ |
| Heating | ✓ |
| | The Inverell Club has been part of Inverell's landscape for over a century. We are open every Friday from 3:30pm. Room hire is available for celebrations, meetings and other functions. |

Wallangra and District Memorial Hall



Open plan hall with stage, supper room, toilets and kitchen.

| | |
|----------------------------------|--|
| Address | Yetman Road, Wallangra 2360 |
| Visitor capacity | 80-100 |
| Internal seating capacity | Contact the Venue |
| Floor space | Kitchen |
| Hire fee | \$75 - half day \$150 - evening |
| Contact details | Una Thomas Ph: 0447 307424 Kim Guest Ph: 0427 299 174 |
| Email | murraystomas@bigpond.com |
| Air conditioning | ✗ |
| Heating | ✗ |
| | Creche area to keep children enclosed during functions. |



Yetman Memorial Hall



A large and well-maintained hall with stage, kitchen and meeting room. Undercover outdoor area available. Positive reviews from performers on acoustics and stage area.

| | |
|----------------------------------|--|
| Address | Warialda Street, Yetman 2410 |
| Visitor capacity | 200-300 |
| Internal seating capacity | 150 |
| Floor space | 400m ² |
| Hire fee | <p>\$100/day-hall \$50/day-kitchen \$25/<2hrs-meeting room \$50/>2hrs-meeting room</p> <p>Crockery and cutlery also available to hire. Contact venue for details on external hire of tables and chairs.</p> |
| Contact details | <p>Charmaine Potter Ph: 0400 970 866</p> |
| Email | c.potter@live.com.au |
| Air conditioning | ✓ Meeting room only |
| Heating | ✗ |



