



# Venue Guide

A guide to community halls & venues for hire in Inverell Shire

## Introduction

Inverell Shire has more than 25 community owned and volunteer run halls and venues available for hire. This guide outlines venues across the shire, including features, hire rates and contact details. Please contact the venue for further information.

Information contained in this guide is correct at time of publication. To update venue listings or enquire to have a volunteer-run, non-profit venue included, please contact Inverell Shire Council by telephone (02) 67288288 or email, [council@inverell.nsw.gov.au](mailto:council@inverell.nsw.gov.au).

## Legend

Throughout the Venue Guide, the following icons are used to depict venue features available to hirers. Contact the venue for further information.



Toilets available



Camping available



Free Wi-Fi available



Venue has hearing loop facility



Wheelchair friendly access



Kitchen facilities available



Audio-visual facilities available, eg. data projector, screen, PA system

## Version Control

V1	October 2021
V2	November 2021
V3	February 2022
V4	January 2023
V5	January 2024

## Table of Contents

<b>ASHFORD</b>	Ashford Bowling Club	4
<b>BONSHAW</b>	Bonshaw Memorial Hall	4
<b>BUKKULLA</b>	Bukkulla Hall	5
<b>COPETON DAM</b>	Copeton Northern Foreshores Communal Hall	5
<b>DELUNGRA</b>	Delungra Memorial Bowling & Recreation Club	6
	Delungra Multipurpose Hall	6
<b>ELSMORE</b>	Elsmore Soldiers Memorial Hall	7
<b>GILGAI</b>	Gilgai Hall	7
<b>GRAMAN</b>	Graman War Memorial Hall	8
<b>GUM FLAT</b>	Gum Flat Hall	8
<b>INVERELL</b>	Inverell Golf Club	9
	Inverell Guide Hall	9
	Inverell Jockey Club	10
	Inverell Pioneer Village	10
	Inverell Rugby Clubhouse	11
	Inverell Tennis Clubhouse	11
	Inverell Town Hall	12
	Inverell Town Hall Annex	12
	Inverell Scottish Pipe Band Hall	13
	Inverell Uniting Church Hall	13
	Scout Hall	15
<b>MYALL CREEK</b>	Myall Creek Public Hall & Recreation Reserve	14
<b>NULLAMANNA</b>	Nullamanna Public Hall & Recreational Reserve	14
<b>TINGHA</b>	Tingha Town Hall	15
<b>WALLANGRA</b>	Wallangra & District Memorial Hall	16
<b>YETMAN</b>	Yetman Memorial Hall	16

# Ashford Bowling Club



Large hall with raised stage area, downstairs supperroom and renovated kitchen Serving the township of Ashford since 1959, the Ashford Bowling Club's function hall is considered as the centre of entertainment within the Ashford Community.

Address	29 Bala Street, Ashford 2361
Visitor capacity	200
Floor space	400m2
Hire fee	Negotiable – contact venue
Contact details	Malcolm Allen Ph: 6725 4202
Email	office@ashfordbowling.club.com.au
Website	www.ashfordbowlingclub.com.au
Air conditioning	✓
Heating	✓



# Bonshaw Memorial Hall



Large hall with raised stage area, downstairs supperroom and renovated kitchen.

Address	2 Miller Street, Bonshaw 2361
Visitor capacity	130+
Floor space	15m x 12m (hall)
Hire fee	\$100/day hire; \$50 hire for short hire; No hire fee applicable for non-profit organisations
Contact details	Michelle Ramsay Ph: 0438 801 020
Email	ramsays@bonshaw.com
Air conditioning	✓
Heating	✓
	Chairs and tables for hire: \$10 per table; \$1 per chair.





## Bukkulla Hall



The hall can hold gatherings, meetings, community events and private events. It is situated on a recreation ground which makes it perfect for hosting campdrafts, horse sports, cricket, car rallies and local meeting groups.

<b>Address</b>	Red Hill Lane, Bukkulla 2360
<b>Postal address</b>	As above
<b>Visitor capacity</b>	150+
<b>Hire fee</b>	\$50-\$100 / day or night + camping fees (if applicable)
<b>Contact details</b>	Kirsty Wall Ph: 0408 826 620 Spike Wall Ph: 0459 255 677
<b>Air conditioning</b>	✗
<b>Heating</b>	✓



## Copeton Northern Foreshores Communal Hall



Constructed in 2021, the hall has panoramic views of Copeton Dam. Hire is available for the conduct of meetings, conferences, weddings, functions and other events as approved by Council.

Strictly no 18<sup>th</sup> or 21<sup>st</sup> birthday parties. Bookings will be reviewed by Council on a case-by-case basis.

Venue is not available Christmas Day, Boxing Day, Easter, New Year's Day or New Year's Eve.

<b>Address</b>	1873 Auburn Vale Road, Copeton 2360
<b>Visitor capacity</b>	100
<b>Floor space</b>	400m <sup>2</sup>
<b>Hire fee</b>	\$500 bond \$200/event- hall only \$250/event- hall & kitchen
<b>Contact details</b>	Inverell Shire Council Ph: 6728 8221
<b>Email</b>	council@inverell.nsw.gov.au
<b>Website</b>	www.inverell.nsw.gov.au
<b>Air conditioning</b>	✓
<b>Heating</b>	✓ (Open wood fire)
	100 x chairs & 12 x tables available for use. BYO cutlery, glassware, crockery & wood for the fireplace.



# Delungra Memorial Bowling and Recreation Club



Photo: Facebook

Bowling club with bar & function/dining room available for hire. Modern, recently renovated kitchenalso available.

Address	30 Inverell Street, Delungra 2403
Visitor capacity	100
Internal seating capacity	80
Hire fee	\$100 non-members \$50 members
Contact details	Amy Taylor Ph: 6724 8204 or 0429 852 064
Email	admin@dmbc.com.au
Website	www.dmbc.com.au
Air conditioning	✓
Heating	✓



# Delungra Multipurpose Hall



Large hall with a kitchen, 2 squash courts and a basketball court. Fenced playground is located next door to hall.

Address	Railway Street, Delungra 2403
Visitor capacity	300
Internal seating capacity	200
Floor space	540m2 (18m x30m)
Hire fee	\$6/ hr - squash courts \$100 - hall only \$125 - hall and kitchen for functions
Contact details	Glenis Charter Ph: 6724 8257
Air conditioning	✗
Heating	✗
	Hall also has a stage. AV facilities: Audio only.



## Elsmore Soldiers Memorial Hall

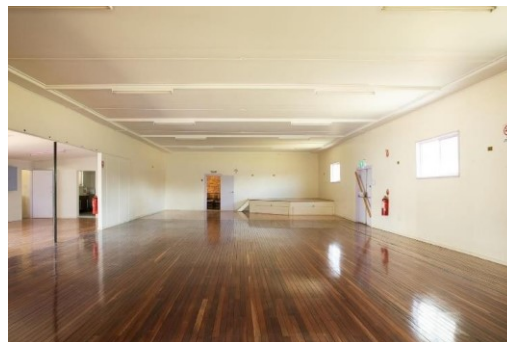


Main hall with stage, bench seating along walls, fullylined with separate supper room and kitchen.  
Playground equipment with shade sails also on site.

<b>Address</b>	1181 Elsmore Road, Elsmore 2360
<b>Visitor capacity</b>	180
<b>Internal seating capacity</b>	Please contact for details
<b>Floor space</b>	160m2 main hall 53m2 supper room and kitchen
<b>Hire fee</b>	Hall hire \$100 + \$50 Bond Supper room hire \$40 + \$40 Bond Meetings \$10
<b>Contact details</b>	Wayne McKinnon Ph: 6723 2250 Ross Murray Ph: 0427 850 492
<b>Air conditioning</b>	✗
<b>Heating</b>	✓
	Ceiling fans in main hall and supper room.



## Gilgai Hall



Renovations to Gilgai Hall were completed in October 2021 and facilities include new toilets, showers, wheelchair friendly access and a new kitchen.

<b>Address</b>	1 Hall Street, Gilgai 2360
<b>Visitor capacity</b>	100
<b>Internal seating capacity</b>	100
<b>Floor space</b>	250m2
<b>Hire fee</b>	Starting from \$250, plus \$300 refundable deposit
<b>Contact details</b>	Cristina Ph: 0408 265 101
<b>Email</b>	gilgaicrownland@gmail.com
<b>Air conditioning</b>	✗
<b>Heating</b>	✗
	Shower facilities, Disability toilets, large oval & a small meeting room.



## Graman War Memorial Hall



Photo: War Memorials Register

Large community hall in Graman which was refurbished in 2021.

<b>Address</b>	4 Ashford Road, Graman 2360
<b>Visitor capacity</b>	200 inside 500 outside
<b>Internal seating capacity</b>	200
<b>Hire fee</b>	\$100/function Meeting hire fees negotiable
<b>Contact details</b>	Lois Reardon Ph: 0447 256 411 Ph: 02 6725 4649
<b>Email</b>	reardonla@skymesh.com.au
<b>Air conditioning</b>	✓ Supper room only
<b>Heating</b>	✗
	Enclosed play area for children.



## Gum Flat Hall



Charming & rustic venue for the perfect country wedding. Located 15 minutes from Inverell on sealed road. Outdoor space large enough for a marquee.

<b>Address</b>	956 Copeton Dam Road, Gum Flat 2360
<b>Visitor capacity</b>	250
<b>Internal seating capacity</b>	100
<b>Floor space</b>	132m2
<b>Hire fee</b>	\$350 for weddings Contact for other hire rates
<b>Contact details</b>	Penny Hackney Ph: 0427 949 953
<b>Email</b>	gumflatlandmanagers@yahoo.com
<b>Air conditioning</b>	✗
<b>Heating</b>	✗
	Cooking facilities: BBQ and microwave only. No stove.





# Inverell Golf Club



Gold Club offering a picturesque venue for Weddings, Parties, Seminars & Recreational Groups.

Address	4078 Bundarra Road, Inverell 2360
Visitor capacity	300
Internal seating capacity	200
Floor space	20m2
Hire fee	Priced on Application, depending on the type of event.
Contact details	Adrian King Ph: 02 6722 1574
Email	manager@inverellgolfclub.com
Air conditioning	X
Heating	X
Open Fireplace in Winter & Ceiling Fans in Summer.	



# Inverell Guide Hall

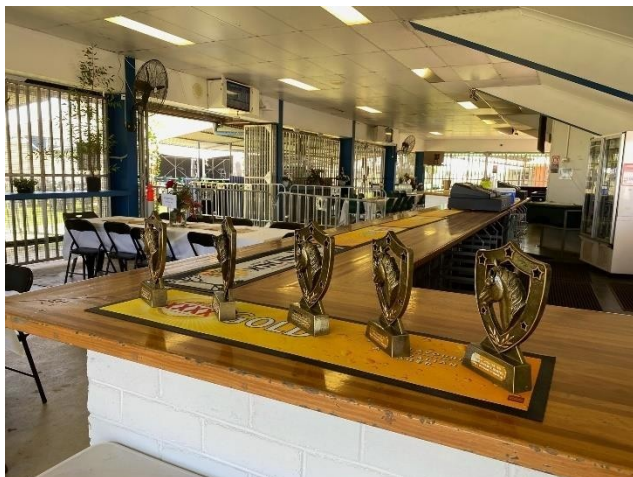


Medium weatherboard building with fenced yard and toilet/shower facilities. Stove, microwave & urn available for use.

Address	63 Campbell Street, Inverell 2360
Visitor capacity	50
Internal seating capacity	50
Floor space	80m2
Hire fee	\$45/day \$70/day + night
Contact details	Beth Hamilton Ph: 0428 224 118
Email	bhamilton10760@hotmail.com
Air conditioning	X
Heating	X



## Inverell Jockey Club



Racecourse with trainer facilities as well as offering venue/function hire.

<b>Address</b>	Cameron Street, Inverell 2360
<b>Visitor capacity</b>	4,500
<b>Internal seating capacity</b>	60 indoors 300 outdoors
<b>Floor space</b>	525m2
<b>Hire fee</b>	Contact Club for details.
<b>Contact details</b>	Secretary: Karen Fontaine Ph: 0403 403 004
<b>Email</b>	info@inverelljockeyclub.com
<b>Website</b>	www.inverelljockeyclub.com
<b>Air conditioning</b>	✓
<b>Heating</b>	✓
	Onsite catering available



## Inverell Pioneer Village



Inverell Pioneer Village is a volunteer run facility with a range of options for hire. This includes an under-cover barbecue area, hall, church and outdoor areas for ceremonies and / or photography.

<b>Address</b>	64 Tingha Road, Inverell 2360
<b>BBQ area</b>	Up to 50 people: \$300 + \$200 Bond Up to 100 people: \$350 + \$250 Bond Over 100: please contact caretaker (inc power, gas, kitchen)
<b>Church</b>	Inc grounds & photos: \$375
<b>Hall</b>	Up to 50 people: \$300 + \$220 Bond Up to 100 people: \$350 + \$200 Bond Over 100: please contact caretaker Capacity: 80 Crockery & cutlery available
<b>Photos in Grounds</b>	\$100 (2 hour limit)
<b>Caretakers</b>	Geoff Marsh & Denise Polosak Ph: 0477 217 179 or 6722 1717
<b>Email</b>	info@inverellpioneervillage.org.au inverellpioneervillage@outlook.com
<b>Website</b>	www.inverellpioneervillage.org.au
<b>Air conditioning</b>	✗
<b>Heating</b>	✗



## Inverell Rugby Clubhouse



Photo: Supplied

Mostly carpeted floor, bar facility, kitchen, PA system with portable microphone, tables & chairs, day & night hire, external enclosed playground.

See website for further details.

<b>Address</b>	100 Ross Street, Inverell 2360
<b>Visitor capacity</b>	Various spaces available
<b>Internal seating capacity</b>	Various spaces available
<b>Floor space</b>	Contact club for details
<b>Hire fee</b>	Contact club for details
<b>Email</b>	<a href="mailto:inverellrugbyclub@outlook.com">inverellrugbyclub@outlook.com</a>
<b>Website</b>	<a href="http://www.inverellhighlanders.com">www.inverellhighlanders.com</a>
<b>Air conditioning</b>	✓
<b>Heating</b>	✓



## Inverell Tennis Clubhouse



We are a tennis sporting organisation providing skill-based weekly competitions to the Inverell area. Hire of the recently refurbished Clubhouse is only available for corporate bookings. Please contact the club for hire details.

<b>Address</b>	115 Evans Street, Inverell 2360
<b>Visitor capacity</b>	Contact club for details
<b>Internal seating capacity</b>	Contact club for details
<b>Floor space</b>	Contact club for details
<b>Hire fee</b>	Contact club for details
<b>Contact details</b>	Joshua Power Ph: 0429 202 160
<b>Email</b>	<a href="mailto:secretary@inverelltennisclub.org.au">secretary@inverelltennisclub.org.au</a>
<b>Website</b>	<a href="http://www.inverelltennisclub.org.au">www.inverelltennisclub.org.au</a>
<b>Air conditioning</b>	✓
<b>Heating</b>	✓





## Inverell Town Hall

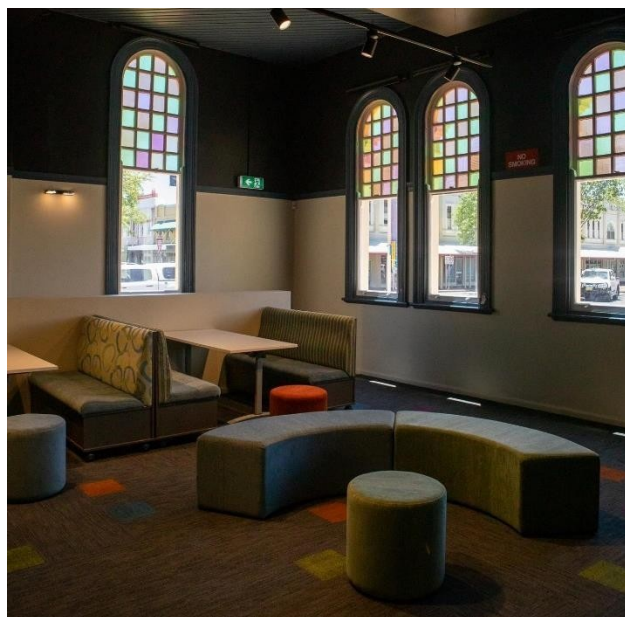


Inverell's premier cultural and performance theatre and venue. Available for hire for cultural events, performances, meetings and conferences. Tiered retractable seating, bar and commercial kitchen.

<b>Address</b>	Cnr Evans & Otho Streets, Inverell 2360
<b>Visitor capacity</b>	502 with Annex
<b>Internal seating capacity</b>	432
<b>Floor space</b>	Multiple spaces available, contact Council for details
<b>Hire fee</b>	Starting from \$350
<b>Contact details</b>	Inverell Shire Council Ph: 6728 8221
<b>Email</b>	Council@inverell.nsw.gov.au
<b>Website</b>	www.inverell.nsw.gov.au
<b>Air conditioning</b>	✓
<b>Heating</b>	✓
	Crockery & cutlery available.
	Not available for weddings or birthday celebrations.



## Inverell Town Hall Annex



Refurbished in 2020, the Annex is attached to the main hall, Inverell's premier cultural and performance theatre and venue. Available for hire for cultural events, performances, meetings and conferences.

<b>Address</b>	Cnr Evans & Otho Streets, Inverell 2360
<b>Visitor capacity</b>	40
<b>Internal seating capacity</b>	40
<b>Floor space</b>	8m x 12m
<b>Hire fee</b>	\$150 minimum
<b>Contact details</b>	Inverell Shire Council Ph: 6728 8221
<b>Email</b>	Council@inverell.nsw.gov.au
<b>Website</b>	www.inverell.nsw.gov.au
<b>Air conditioning</b>	✓
<b>Heating</b>	✓





## Inverell Uniting Church Hall



A community hall which is available for hire for suitable activities. Please note that church activities take precedence, which can sometimes come at short notice.

<b>Address</b>	22 Rivers Street, Inverell 2360
<b>Visitor capacity</b>	70
<b>Floor space</b>	138m2
<b>Hire fee</b>	\$100/day hire Negotiable re funerals
<b>Contact details</b>	Mrs Jacki Watts Ph: 0427 672 241
<b>Email</b>	wattil1946@hotmail.com
<b>Air conditioning</b>	✓
<b>Heating</b>	✓
	2 disabled parks available at venue. Rest of parking on street.



## Inverell Scottish Pipe Band Hall



The main hall has a polished timber floor. The kitchen has a vinyl floor and is equipped with stainless steel benchtops, oven, electrical hotplate, and a fridge (no freezer). Tables and chairs are available for use in the hall, as well as a piano.

<b>Address</b>	64 Ring Street, Inverell 2360
<b>Visitor capacity</b>	110
<b>Internal seating capacity</b>	80
<b>Floor space</b>	78m2 hall plus 18m2 kitchen
<b>Hire fee</b>	\$100/day plus electricity
<b>Contact details</b>	Mrs Chris McIntyre Ph: 6722 1205
<b>Email</b>	inverellpipeband@gmail.com
<b>Air conditioning</b>	✓
<b>Heating</b>	✓
	Hirer must have own insurance. No smoking, no alcohol. Restricted parking- 15 parks on block with overflow on Ring St.



## Myall Creek Public Hall & Recreation Reserve



Photo: War Memorials Register

A well-maintained public hall consisting of a main room with stage, also kitchen and supper room. The reserve also has 2 tennis courts and a cricket field.

<b>Address</b>	1 Reserve Creek Road, Myall Creek 2403
<b>Visitor capacity</b>	300-400
<b>Internal seating capacity</b>	Main room: 80+ Supper room: 40+
<b>Floor space</b>	Main room: 100m <sup>2</sup> Supper room: 55m <sup>2</sup>
<b>Hire fee</b>	Contact venue for pricing schedule
<b>Contact details</b>	Mike Partridge Ph: 6723 6486 Warren Ph: 0427 543 083
<b>Email</b>	jm02partridge@gmail.com
<b>Air conditioning</b>	✗
<b>Heating</b>	



## Nullamanna Public Hall & Recreational Reserve



Photo: Facebook

Nullamanna Public Hall complex is a large multipurpose facility including sports ground and cattle yards. There is an equipped supper room (hot water urn, refrigerator, stove and microwave) situated off the main hall. BBQs and Bain Marie are available. Amenities block includes showers.

<b>Address</b>	1307 Nullamanna Road, Nullamanna 2360
<b>Visitor capacity</b>	300
<b>Internal seating capacity</b>	Tables & Chairs to cater for 96 people.
<b>Floor space</b>	Main hall: 9.5m x 15m Stage: 7.5m x 3.2m
<b>Hire fee</b>	\$500 bond \$80 / ½ day hall hire \$120/day hall hire \$500/day sportsground hire
<b>Contact details</b>	Yvette Crowther Ph: 0408 322 646
<b>Email</b>	nullamannareserve@gmail.com
<b>Facebook</b>	Facebook.com/Nullamanna
<b>Air conditioning</b>	✗
<b>Heating</b>	✓



## Scout Hall, Inverell



A recently refurbished hall located adjacent to Inverell CBD with a kitchen, toilets and a shower.

<b>Address</b>	Glen Innes Road, Inverell 2360
<b>Visitor capacity</b>	40+
<b>Internal seating capacity</b>	40+
<b>Hire fee</b>	\$100 per day/night \$100 key deposit
<b>Contact details</b>	Jon Cox Ph: 0418 463 206
<b>Email</b>	jon.cox@nsw.scouts.com.au
<b>Air conditioning</b>	✓
<b>Heating</b>	✓



## Tingha Town Hall



Located in Tingha's main street, this large hall is available for community events and Sorry Business. Hall includes stage area and modern, well equipped kitchen.

<b>Address</b>	Ruby Street, Tingha 2369
<b>Visitor capacity</b>	150+
<b>Internal seating capacity</b>	100+
<b>Hire fee</b>	Contact Inverell Shire Council
<b>Contact details</b>	Inverell Shire Council Ph: 6728 8221
<b>Air conditioning</b>	✗
<b>Heating</b>	✗





## Wallangra and District Memorial Hall



Open plan hall with stage, supper room, toilets and kitchen.

<b>Address</b>	Yetman Road, Wallangra 2360
<b>Visitor capacity</b>	80-100
<b>Internal seating capacity</b>	Contact the venue
<b>Floor space</b>	kitchen
<b>Hire fee</b>	\$75 - half day \$150 - evening
<b>Contact details</b>	Una Thomas Ph: 0447 307424 Kim Guest Ph: 0427 299 174
<b>Email</b>	murraystthomas@bigpond.com
<b>Air conditioning</b>	✗
<b>Heating</b>	✗
	Creche area to keep children enclosed during functions.



## Yetman Memorial Hall



A large and well-maintained hall with stage, kitchen and meeting room. Undercover outdoor area available. Positive reviews from performers on acoustics and stage area.

<b>Address</b>	Warialda Street, Yetman 2410
<b>Visitor capacity</b>	200-300
<b>Internal seating capacity</b>	150
<b>Floor space</b>	400m2
<b>Hire fee</b>	\$100/day-hall \$50/day-kitchen \$25/<2hrs-meeting room \$50/>2hrs-meeting room Crockery and cutlery also available to hire. Contact venue for details on external hire of tables and chairs.
<b>Contact details</b>	Charmaine Potter Ph: 0400 970 866
<b>Email</b>	c.potter@live.com.au
<b>Air conditioning</b>	✓ Meeting room only
<b>Heating</b>	✗

