

## MAYOR'S MESSAGE

This brochure provides an overview of water conservation measures for Inverell Shire, which apply during Daylight Saving Time and commenced in December 2019.

Since establishing a water supply from Copeton Dam in 1982, there has never been a need to impose water restrictions at Inverell, Gilgai, Tingha, Mount Russell and Delungra.

While Inverell Shire has been fortunate to have reliable treated town water supplies, as a community, we should not become complacent.

At the November 2019 Council meeting, councillors voted unanimously to introduce water conservation measures in association with a Drought Management Plan.

The Plan is Council's blueprint for how it will conserve treated town water supplies, what types of water restrictions will apply and when they will take effect, as well as emergency responses.

### How does this impact residents?

From December 2019, permanent water conservation measures will apply during Daylight Saving Time. A summary of these permanent measures are provided in this brochure. If required, further water restrictions will apply.

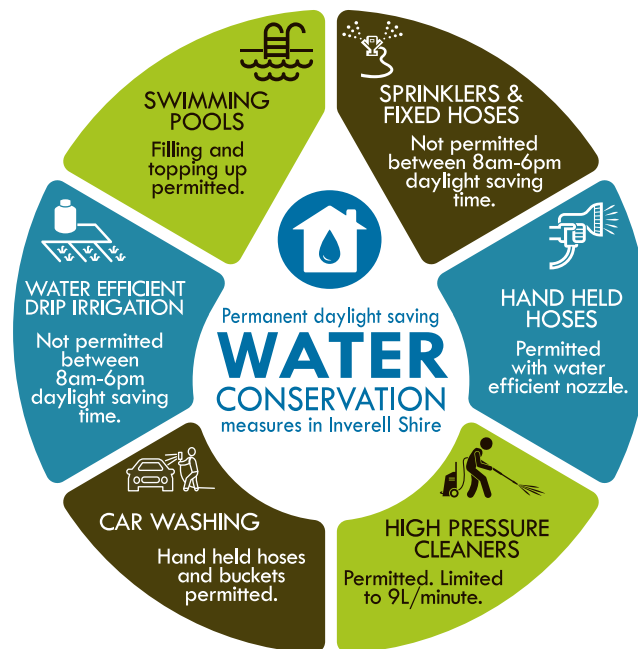
Council has set out five levels of water restrictions, ranging from Level 1 (Low) where sprinklers are limited to two hours per day, to Level 5 (Emergency), where all outdoor use is banned. The table inside this brochure provides an overview of water restriction levels.

Council and WaterNSW will carefully monitor the water supplies going forward, including Yetman and Ashford and ensure our community is updated.

I encourage residents to keep abreast of water restriction levels and waterwise information by following Council on social media, visiting our website or through local news outlets.

**Paul Harmon**  
Mayor

## CURRENT RESTRICTIONS\*



\* If required, further restrictions will apply - see over page.

## CONTACT COUNCIL

Phone: 02 6728 8200

Office: 144 Otho Street, Inverell NSW, 2360

Email: [council@inverell.nsw.gov.au](mailto:council@inverell.nsw.gov.au)

## CONNECT WITH COUNCIL



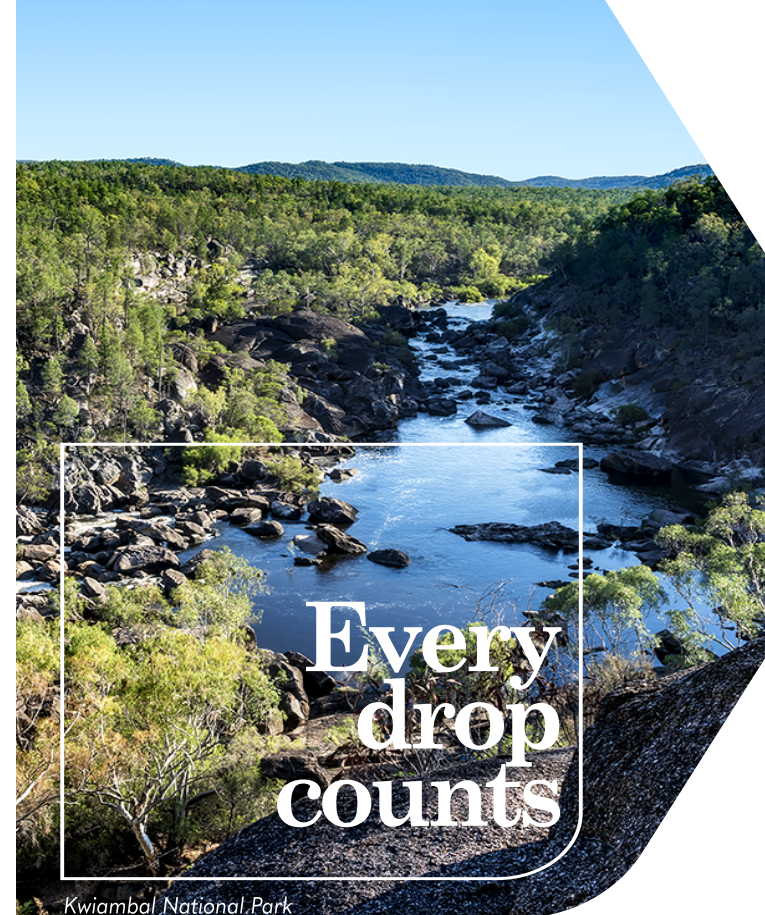
[inverell.nsw.gov.au](http://inverell.nsw.gov.au)



[facebook.com/InverellCouncil](https://facebook.com/InverellCouncil)



[@inverellnsw](https://www.instagram.com/inverellnsw)



## A GUIDE TO WATER CONSERVATION IN INVERELL SHIRE



**INVERELL**  
SHIRE COUNCIL

# WATER CONSERVATION GUIDE

	PERMANENT DURING DAYLIGHT SAVING Water conservation measures	LEVEL 1 LOW Water conservation measures	LEVEL 2 MODERATE Water conservation measures	LEVEL 3 HIGH Water conservation measures	LEVEL 4 VERY HIGH Water conservation measures	LEVEL 5 EMERGENCY Water conservation measures
Hand held hose with water efficient nozzle	✓	6pm-8am DST 4pm-9am AEDT	6pm-8pm DST 5pm-7pm AEDT	15 mins/property within a 2hr window	✗	✗
Sprinklers, micro sprays, fixed hoses	6pm-8am DST	6pm-8pm DST 5pm-7pm AEDT	✗	✗	✗	✗
Watering of new turf	* terms apply - see below	* terms apply - see below	* terms apply - see below	✗	✗	✗
Water efficient drip irrigation	6pm-8am DST	6pm-8am DST 4pm-9am AEDT	6pm-8pm DST 5pm-7pm AEDT	✗	✗	✗
High pressure cleaners (limited to 9L/minute)	✓	✓	✓	✗	✗	✗
Buckets / Cans (general watering of lawns and gardens)	✓	✓	✓	6pm-8pm DST 5pm-7pm AEDT	Grey water only	Grey water only
Washing cars with bucket	✓	✓	✓	6pm-8am DST 4pm-9am AEDT	Car window cleaning only	Car window cleaning only
Washing cars with hand held hose	✓	6pm-8am DST 4pm-9am AEDT	6pm-8pm DST 5pm-7pm AEDT	✗	✗	✗
Washing down hard surface with hand held hose	✓	✗	✗	✗	✗	✗
Private swimming pools - filling	✓	✓	✓	✗	✗	✗
Private swimming pools - topping up	✓	✓	✓	✓	✗	✗
Evaporative coolers	✓	✓	✓	✓	✓	✓



## FOLLOW US ON FACEBOOK & INSTAGRAM

for updates as well as Waterwise tips & information on everything from grey water re-use to installing rainwater tanks:



facebook.com/InverellCouncil



@inverellnsw



For a full copy of the 2019 Drought Management Plan, visit [www.inverell.nsw.gov.au](http://www.inverell.nsw.gov.au)

DST = Daylight Saving Time

AEDT = Australian Eastern Daylight Time

\* Permitted 6pm-8am DST or 4pm-9am AEST or with an approved 6-week New Turf Watering Plan.

\*\* Sprinklers permitted for 6pm-8pm DST or 5pm-5pm AEDT with approved 6-week New Turf Watering Plan.

Refer to the Inverell Shire Council Drought Management Plan 2019 for commercial and industrial use & water cartage from Council standpipes.



**INVERELL**  
SHIRE COUNCIL