




DISABLED PARKING - INVERELL TOWNSHIP


 Indicates Disabled Parking spaces

IMPORTANT: This map is not a precise survey document. Accurate locations can only be determined by a survey on the ground. This information has been prepared for Council's internal purposes and for no other purpose. No statement is made about the accuracy or suitability of the information for use for any purpose (whether the purpose has been notified to Council or not). While every care is taken to ensure the accuracy of this data, neither the Inverell Shire Council nor the Department of Lands makes any representations or warranties about its accuracy, reliability, completeness or suitability for any particular purpose and disclaims all responsibility and all liability (including without limitation, liability in negligence) for all expenses, losses, damages (including indirect or consequential damage) and costs which you might incur as a result of the data being inaccurate or incomplete in any way and for any reason. © The State of New South Wales (Department of Lands) 2008. © Inverell Shire Council 2008. This map was produced on the GEOCENTRIC DATUM OF AUSTRALIA 1994 (GDA94), which has superseded the Australian Geographic Datum of 1984 (AGD66/84). Heights are referenced to the Australia Height Datum (AHD) heights. For most practical purposes GDA94 coordinates and satellite derived (GPS) coordinates based on the World Geodetic Datum 1984 (WGS84) are the same.





DISABLED PARKING - INVERELL TOWNSHIP

 Indicates Disabled Parking spaces

IMPORTANT: This map is not a precise survey document. Accurate locations can only be determined by a survey on the ground. This information has been prepared for Council's internal purposes and for no other purpose. No statement is made about the accuracy or suitability of the information for use for any purpose (whether the purpose has been notified to Council or not). While every care is taken to ensure the accuracy of this data, neither the Inverell Shire Council nor the Department of Lands makes any representations or warranties about its accuracy, reliability, completeness or suitability for any particular purpose and disclaims all responsibility and all liability (including without limitation, liability in negligence) for all expenses, losses, damages (including indirect or consequential damage) and costs which you might incur as a result of the data being inaccurate or incomplete in any way and for any reason. © The State of New South Wales (Department of Lands) 2008, © Inverell Shire Council 2008. This map was produced on the GEOCENTRIC DATUM OF AUSTRALIA 1994 (GDA94), which has superseded the Australian Geographic Datum of 1984 (AGD66/84). Heights are referenced to the Australia Height Datum (AHD) heights. For most practical purposes GDA94 coordinates and satellite derived (GPS) coordinates based on the World Geodetic Datum 1984 (WGS84) are the same.





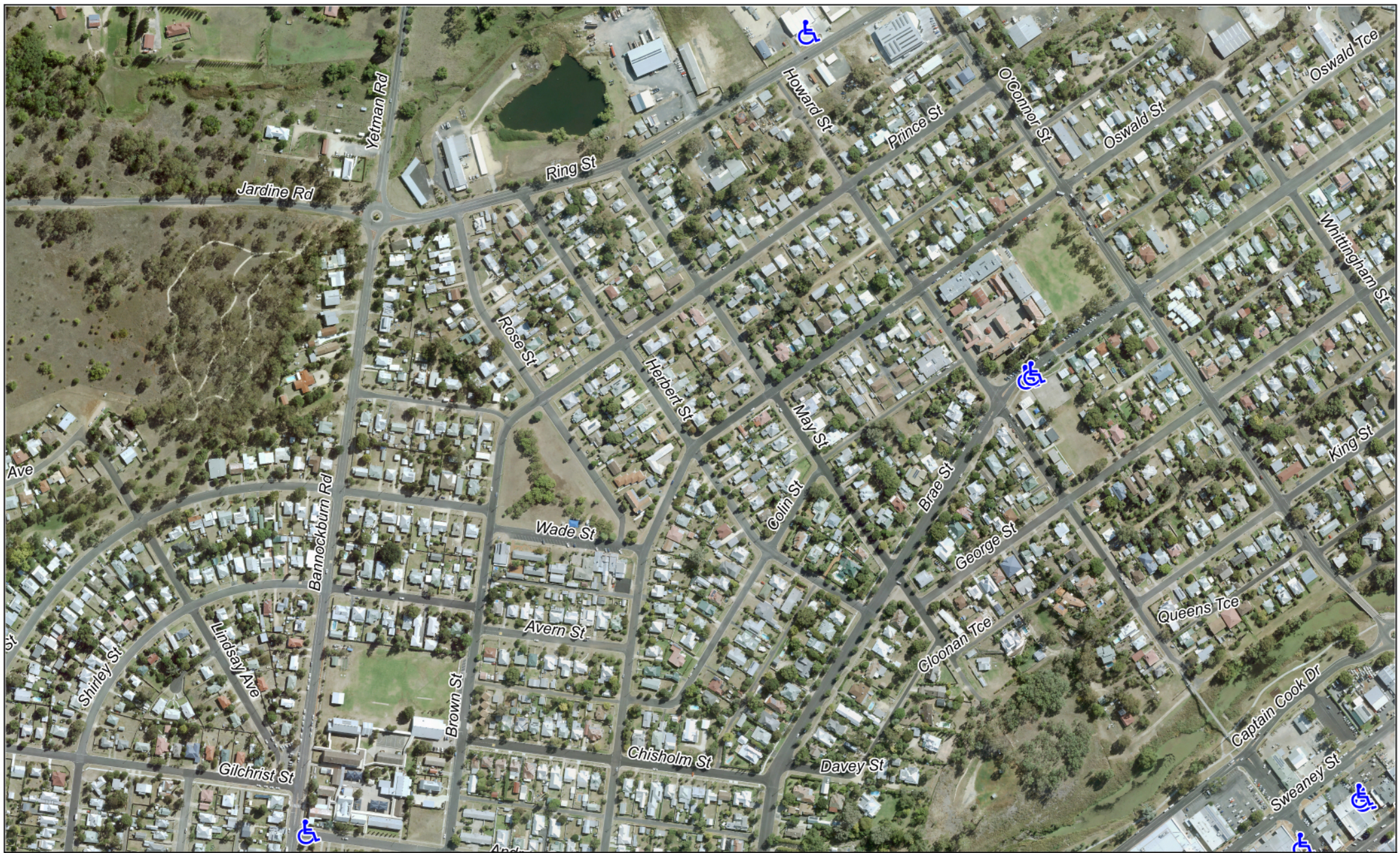
DISABLED PARKING - INVERELL TOWNSHIP




Indicates Disabled Parking spaces

IMPORTANT: This map is not a precise survey document. Accurate locations can only be determined by a survey on the ground. This information has been prepared for Council's internal purposes and for no other purpose. No statement is made about the accuracy or suitability of the information for use for any purpose (whether the purpose has been notified to Council or not). While every care is taken to ensure the accuracy of this data, neither the Inverell Shire Council nor the Department of Lands makes any representations or warranties about its accuracy, reliability, completeness or suitability for any particular purpose and disclaims all responsibility and all liability (including without limitation, liability in negligence) for all expenses, losses, damages (including indirect or consequential damage) and costs which you might incur as a result of the data being inaccurate or incomplete in any way and for any reason. © The State of New South Wales (Department of Lands) 2008, © Inverell Shire Council 2008. This map was produced on the GEOCENTRIC DATUM OF AUSTRALIA 1994 (GDA94), which has superseded the Australian Geographic Datum of 1984 (AGD66/84). Heights are referenced to the Australia Height Datum (AHD) heights. For most practical purposes GDA94 coordinates and satellite derived (GPS) coordinates based on the World Geodetic Datum 1984 (WGS84) are the same.





DISABLED PARKING - INVERELL TOWNSHIP

 Indicates Disabled Parking spaces

IMPORTANT: This map is not a precise survey document. Accurate locations can only be determined by a survey on the ground. This information has been prepared for Council's internal purposes and for no other purpose. No statement is made about the accuracy or suitability of the information for use for any purpose (whether the purpose has been notified to Council or not). While every care is taken to ensure the accuracy of this data, neither the Inverell Shire Council nor the Department of Lands makes any representations or warranties about its accuracy, reliability, completeness or suitability for any particular purpose and disclaims all responsibility and all liability (including without limitation, liability in negligence) for all expenses, losses, damages (including indirect or consequential damage) and costs which you might incur as a result of the data being inaccurate or incomplete in any way and for any reason. © The State of New South Wales (Department of Lands) 2008, © Inverell Shire Council 2008. This map was produced on the GEOCENTRIC DATUM OF AUSTRALIA 1994 (GDA94), which has superseded the Australian Geographic Datum of 1984 (AGD66/84). Heights are referenced to the Australia Height Datum (AHD) heights. For most practical purposes GDA94 coordinates and satellite derived (GPS) coordinates based on the World Geodetic Datum 1984 (WGS84) are the same.

