

INVERELL COMMUNITY DIRECTORY

2019

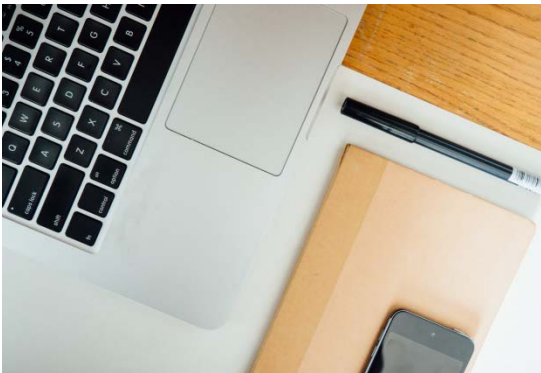




Aboriginal & Torres Strait Islander – Pg. 3
Support Groups | Services



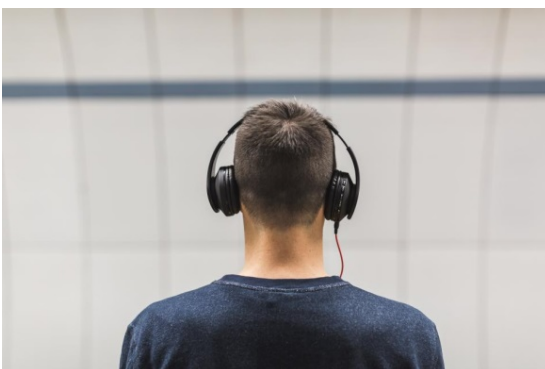
Children's Services – Pg. 4
Services | Childcare



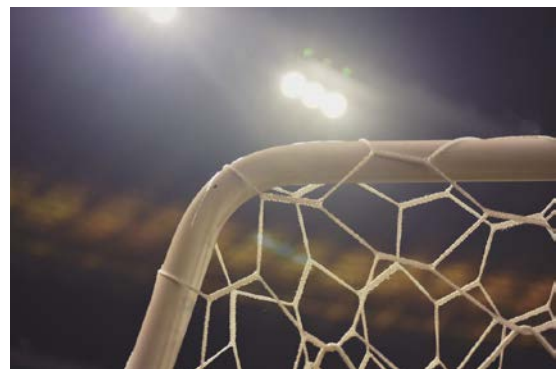
Community – Pg. 7
Accommodation | Disability Services |
Education & Training | Employment |
Support Services



Health Services – Pg. 18
Medical Support Services | Mental
Health | Seniors – Accommodation,
Care & Support



Organisations, Clubs & Groups – Pg. 25
Arts, Music & Drama | Church Services |
Hobbies & Social Groups | Organised Clubs



Recreation & Facilities – Pg. 38
Boating & Fishing | Community Halls &
Centres | Parks, Reserves &
Sportsgrounds | Sporting Bodies

ABORIGINAL & TORRES STRAIT ISLANDER

Aboriginal Health & Liaison Officer

PO Box 701
Inverell Community Health Building
Swanbrook Road, Inverell 2360

Ph: 6721 9600

Aiming to Improve Aboriginal health and access to local health services for the Aboriginal community through support and education. Also promoting the development of cultural awareness.
Provides assistance to Aboriginal people in hospital by helping medical personnel understand Aboriginal culture.

Armajun Aboriginal Health Service

PO Box 27
1 River Street, Inverell 2360

Contact: Debbie McCowen
Ph: 6721 9777
Fax: 6721 2297
Email: dmccowen@armajun.org.au

Armajun is a community controlled aboriginal health service providing culturally appropriate primary health care services to Aboriginal people and communities in the Inverell and surrounding districts of North East Rural NSW.

Best Community Links

16 Waratah Avenue, Inverell 2360

Ph: 6721 4761
Fax: 6721 1409

Email: communitylinks@best.com.au
Website: www.mycss.com.au

Supporting Indigenous community members and their families by providing links and referrals to a range of mainstream and Indigenous services which may include welfare and social support, family violence, health (including drug and alcohol services), housing, child care and legal aid.

Inverell Family and Youth Support Service

PO Box 990
3 Glen Innes Road, Inverell 2360

Ph: 6720 8850
Fax: 6722 4099

Email: admin-ifyss@pathfinders-aus.org

The Aboriginal Family Worker is available 5 days a week to provide free and confidential support services for families with children aged 0-8 years. Advice on activities and programs to enhance the skills and confidence of parents/carers with the aim of improving educational, social and health outcomes for their children. A play group is held at Ashford every Wednesday (excluding school holidays).

Inverell – Tingha NAIDOC Committee

Chairperson: James Sheather
Ph: 6721 9777

The committee meets on a monthly basis.

CHILDREN'S SERVICES

CHILDCARE

Grow Family Daycare IDFS

PO Box 807
30-34 Campbell St, Inverell 2360

Ph: 6722 5590
Fax: 6722 4609

Email: fdcmanager@ids.net.au
Website: www.inverelldaycare.com.au

Grow Family Day Care is an accredited service that offers full time, part time, casual, and respite care in a home-based environment for children aged between 0-13 years. All educators are fully compliant and registered to provide a comfortable, secure and safe environment in a home setting. All educators hold a minimum certificate III in children's services qualifications, a current First Aid, Asthma & Anaphylaxis and CPR certificate, as well as up to date child protection requirements. Child Care Subsidy is available to eligible families.

KCL Family Daycare

PO Box 995
6C Brewery Street, Inverell 2360

Ph: 6721 1811
Ph: 0417 490 404
Fax: 6721 1833

Website: www.kcl.com.au

KCL Family Day Care is an accredited privately owned and operated child care service. KCL offer home based child care in the form of Family Day Care and In Home Care. Care is available for children aged birth to 13 years and older if needed. KCL is providing care in: Inverell, Gilgai, Glen Innes, Deep-water, Emmaville, Tenterfield, Bonshaw, Ashford, Warialda, Gravesend, Cherry Tree Hill, Delungra, Tingha, Bonshaw and Armidale. KCL is not limited to just these areas and is always looking to expand to isolated towns.

Little Gems Playgroup

Sapphire City Church
21 Mansfield Street, Inverell 2360

Contact: Glenda Hare
Ph: 0413 320 681

Small fee, morning tea provided. Play activities and craft. Held every Tuesday from 9.30am to 11am.

Ashford Preschool

PO Box 72
53 Martyn Street, Ashford 2361

Contact: Georgina Krauss
Ph: 6725 4211

A fun program covering a variety of activities including indoor and outdoor play, music, language, craft, drama, science etc. Bridging the gap between home and school.

Preschool: Tuesday, Wednesday, Thursday: 9am- 3pm
School Readiness Program: Wednesday 9am-3pm

Jack and Jill Preschool

19 Rivers Street, Inverell 2360

Ph: 6722 3651
Fax: 6721 4727

Email: jackandjillpreschool@ids.net.au

Jack and Jill preschool provide an early childhood preschool program for children 3-5 years old. We believe each child is unique and we strive to deliver a warm, caring, educationally stimulating and challenging environment. In this environment the children feel secure, happy and safe so they can develop to their full potential.

Kindamindi Preschool

30 - 34 Campbell Street, Inverell 2360

Ph: 6722 4038

Fax: 6722 2065

Email: kindaminidpreschool@ids.net.au

Community based early childhood programs. Quality Education services for children 2-5 years.

Full day sessions: Monday to Friday 8.30am-4pm

Northern Roads Activity Van – Mobile Preschool

30-34 Campbell Street, Inverell 2360

Ph: 6722 4038

Fax: 6722 2065

Email: nrav1@ids.net.au or nrav2@ids.net.au

Hosting two fully equipped vans that provide a preschool service to small rural villages surrounding Inverell.

Operates: Monday to Thursday

Catherine Campbell Centre

71-77 Campbell Street, Inverell 2360

Ph: 6722 2177

Fax: 6721 1595

Email: ccc@ids.net.au

Website: www.inverelldaycare.com.au

Long day care for children 0-5yrs. Priority given to children of working parents. Children are given a preschool education whilst attending.

Open: Monday to Friday

Nurture One George Street Children's Centre

75 George Street, Inverell 2360

Ph: 6722 5169

Email: georgestreet@nurtureone.com.au

Operates: Monday to Friday 6:30am-6:30pm

George Street Children's Centre is a Long Day-Care and Preschool Centre catering for children aged 6 weeks to 5 years. The centre provides a program curriculum in all rooms for all ages as well as nappies and hot cooked meals.

Vacation Care

30 – 34 Campbell Street, Inverell 2360

Ph: 6722 4038

Ph: 0408 467 314

Fax: 6722 2065

Email: multiservices@ids.net.au

Website: www.ids.net.au

A child care service that provides activities for school children aged 5 to 12 years during school holidays.

CHILDRENS SERVICES

Brighter Access

PO Box 303
37-39 Campbell Street, Inverell 2360

Ph: 6722 5548
Fax: 6721 4304

Email: tanyaf@brighteraccess.com.au
Website: www.brighteraccess.com.au

Brighter Access is a community based service provider committed to supporting families who have a member with a disability.

The organisation provides: Out of School Hours Care, Vacation Care and Early Childhood Intervention (Inverell and Tenterfield).

Department of Education – Hearing Support Teacher

C/O Inverell Public School
PO Box 34, Inverell 2360

Contact: Ms Heather Russell
Ph: 6722 3072
Fax: 6722 4324

Available to assist and give information about all hearing losses including otitis (glue ear) to all local preschools, schools and interested parental groups. Also available to assist any child and their family, teachers and school who have any form of hearing loss from birth to 18 years of age.

The Inverell Toy Library

30 - 34 Campbell Street, Inverell 2360

Ph: 0429 921 337

Email: multiservices@ids.net.au

The Toy Library is a Community Service run by Inverell District Family Services Inc., providing high quality fun and educational toys for 0-6 years and playgroups in selected rural villages.

COMMUNITY

ACCOMMODATION

Inverell Accommodation Services

PO Box 359
48 Howard Street, Inverell 2360

Ph: 6722 4947
Fax: 6722 1444

Email: admin@iasinverell.com.au

A community body dedicated to improving accommodation choices for people with an intellectual disability. Respite care options are also available.

Homes North Community Housing

PO Box 426
23 Oliver Street, Inverell 2360

Ph: 6722 5137
A/H - Link2home: 1800 152 152

Email: inverell@homesnorth.org.au

Homes North Community Housing provides a range of safe and affordable housing for people on low to moderate incomes. Homes North have offices across the New England North West including Inverell, Glen Innes, Tenterfield, Tamworth, Armidale and Moree. Applications for social housing can be made at the Inverell Homes North office.

For people in crisis and homeless, experiencing domestic and family violence and need housing, or looking for other housing options such as help to stay in private rental please contact Homes North during business hours. For after hours assistance contact Link2home on 1800 152 152.

Office Hours: Monday to Friday 9am to 5pm

Inverell Women's Refuge Centre

78 Campbell Street, Inverell 2360

Ph: 6722 3502

Email: inverellwr@pathfinders-aus.org

The Refuge Centre provides a safe, secure, confidential and caring environment that encourages opportunities for women and children escaping from domestic violence or at risk of domestic violence or some other crisis that has left them homeless or at risk of homelessness to develop and enhance their own dignity and self respect. Some of the services the refuge provides are crisis accommodation, personal support, referrals, women's groups, advocacy, confidentiality, case management and court support.

Kirinari Community Services

21 Oliver Street, Inverell 2360

Ph: 6721 5011
Fax: 6721 5012

E-mail: trudi.darby@kirinari.com.au or
peter.collins@kirinari.com.au

Kirinari provides supported accommodation services to people with a disability; priding themselves on person centeredness and independence. More information can be found at www.kirinari.com.au

The Legacy Club of Inverell Inc.

PO Box 231
Oliver Lane, Inverell 2360

Ph: 6722 1945
Fax: 6722 1945

Email: inverell.legacy@gmail.com
Website: www.legacy.com.au/inverell

Eleven self contained one bedroom units located opposite the RSM Club. Must be over Aged Pension age, preference is given to Legacy Widows.



DISABILITY SERVICES

Ability Links

3 Glen Innes Road, Inverell 2360

Ph: 6720 8870
Mob: 0488 254 997

Email: abilitylinks-inv@pathfinders.ngo

Pathfinder's, Ability Links program is a new service located in Inverell servicing the New England/North West. Linkers work with families and carers and support those with a disability to become more confident, achieve goals and dreams as well as access support services in the local community. No formal diagnosis is required to access the Ability Links program, which works with individuals aged between 9 and 64 years of age. More information can be found at www.pathfinders-aus.org

Ashford Multi Service Outlet

PO Box 53
6 Kneipp Street, Ashford 2361

Ph: 6725 4479
Fax: 6725 4312

Providing services to assist eligible people within the Ashford area maintain their independence with services such as Community Transport, Meals on Wheels, Social Support, Lawn Mowing and Social Activities. This outlet also provides a Day Care service on Tuesdays.

Brighter Access

PO Box 303
37-39 Campbell Street, Inverell 2360

Ph: 6722 5548
Fax: 6721 4304

Email: tanyaf@brighteraccess.com.au
Website: www.brighteraccess.com.au

Brighter Access is a community based service provider committed to supporting families who have a member with a disability.

The organisation provides:

- Respite Access - flexible respite, host family respite, adult leisure, respite flat
- Life Skills Access - community participation, life choices, active ageing - across the New England
- Children's Services: out of school hours care, Vacation Care, Early Childhood Intervention (Inverell and Tenterfield).

Brighter Access – Early Childhood Intervention

PO Box 303
86 Henderson Street, Inverell 2360

Ph: 6722 5962
Fax: 6722 5962

Email: trudyj@brighteraccess.com.au
Website: www.brighteraccess.com.au

Playgroup and therapy sessions are held on Thursdays for those who are eligible.

Operating Hours: Monday to Friday 9am-4pm

Carer Support Group

PO Box 303, Inverell 2360

Ph: 6722 5548
Fax: 6721 4304

Email: tanyaf@brighteraccess.com.au

Support groups for carers of a person with a disability. More information can be found at www.brighteraccess.com.au

Connections

PO Box 897
89 Vivian Street, Inverell 2360

Ph: 6722 4144
Fax: 6722 4622

Email: info@connectionsinverell.com
Website: www.connectionsinverell.com

Connections is a service for adults with an Intellectual Disability. Connections provide the following programs: Transition to Work, Community Participation, Post School Options, Independent Living Training and Community Access, Leisurelink and Brokerage service.

Our mission is, "To create and succeed in partnerships with people with disabilities'. To provide excellent services focused on person centred planning and independence. Striving for a community free from discrimination, supporting people to achieve their maximum potential".

Cottage Carer's Support Group

PO Box 303, Inverell 2360

Ph: 6721 0821

Cottage Carer's Support Group provides social and emotional support to carers by their peers.

Inverell Community Health

PO Box 701
Swanbrook Road, Inverell 2360

Ph: 6721 9600
Fax: 6721 9580

A Community Health Service providing a comprehensive range of services for Inverell and surrounding district.

Opening Hours: Monday to Friday 8.30am-5pm

Kirinari Community Services

Shop 4 Byron Arcade, Evans Street, Inverell 2360

Ph: 6721 5011
Fax: 6721 5012

E-mail: trudi.darby@kirinari.com.au or
peter.collins@kirinari.com.au

Website: www.kirinari.com.au

A disability service that provides;

- Community Participation
- Post School Options
- Independent living training
- Community Access

The Purpose of life is to be happy – If you can dream it, we can help you achieve it.

Advanced Personal Management

3/88 Byron Street, Inverell 2360

Ph: 6721 5605
Fax: 6721 5629

Website: www.apm.net.au

Advanced Personnel Management is a Disability Employment Network Provider. We work with people with disabilities and/or barriers and assist them into suitable employment or training. We also work with school students with disabilities and/or barriers and assist to place them into employment. This is a free service to all our clients.

Benevolent Society

Ph: 1800 BENSOC 1800 236 762

Web: www.benevolent.org.au

Email: customercare@benevolent.org.au

Australia's first charity, our vision is a just society where everyone lives their best life. Supporting people with disabilities, children, families, older Australians & carers since 1813. Not-for-profit and non-religious, a charity committed to people. Through a dedicated team we provide service to support you and your loved ones to thrive. Our services include:

- Home support services for older Australians to enable them to remain in their home and live their best life
- Therapy and support services for people with a disability
- Support to build positive family relationships
- Child development and behaviour support
- Mental Health

Northaven

PO Box 280
65 Oliver Street, Inverell 2360

Ph: 6722 2280

Fax: 6722 5838

Email: admin@northavenltd.com.au

Provides employment and training for people with a disability in the following areas; transport, recycle sorting, recycle business collection, survey pegs and preparation, carrier and freight work and factory work.

EDUCATION & TRAINING

Home School Liaison Officer

C/O Macintyre High School
Swanbrook Road, Inverell 2360

Contact: Jane Hunter
Ph: 6722 1555

Assisting schools, parents and caregivers with attendance related problems. The officer can be contacted through any government school. The officer is based at Macintyre High School and services all schools in the Inverell area.

PRIMARY SCHOOLS

Ashford Central School

51 Martyn Street, Ashford 2361

Ph: 6725 4101
Fax: 6725 4336

Email: ashford-c.school@det.nsw.edu.au
Website: www.ashford-c.schools.nsw.edu.au

Caters for students K-12 with comprehensive quality education programs delivered by highly qualified and dedicated teachers

Bonshaw Public School

Texas Street, Bonshaw 2361

Ph: (07) 4653 5147
Fax: (07) 4653 5232

Email: bonshaw-p.school@det.nsw.edu.au
Website: www.bonshaw-p.schools.nsw.edu.au

Bonshaw Public School presents a caring, safe and friendly environment that enables students and staff to learn from each other whilst encouraging individuality and alternative avenues to success.

Delungra Public School

Wallangra Street, Delungra 2403

Ph: 6724 8407
Fax: 6724 8321

Email: delungra-p.school@det.nsw.edu.au
Website: www.delungra-p.schools.nsw.edu.au

Committed to aiding each child develop to their full potential through the provision of sound teaching practices in a supportive child centred environment. K-6.

Gilgai Public School

Gilgai Creek, Gilgai 2360

Ph: 6723 1309
Fax: 6723 1481

Email: gilgai-p.school@det.nsw.edu.au
Website: www.gilgai-p.schools.nsw.edu.au

Gilgai Public School is committed to providing quality education in a nurturing and inclusive environment. Our strong focus on academic, cultural, sporting and technology programs enable our students to be confident, successful and to become lifelong learners.

Gum Flat Public School

958 Copeton Dam Road, Gum Flat 2360

Ph: 6723 2883
Fax: 6723 2928

Email: gumflat-p.school@det.nsw.edu.au
Website: www.gumflat-p.schools.nsw.edu.au

Education for K-6 in a supporting and challenging environment. The schools motto is "Caring and Achieving".

Holy Trinity Catholic School

Moore Street, Inverell 2360

Ph: 6722 4066
Fax: 6722 2116

Email: info@holytrinity.nsw.edu.au
Website: www.holytrinity.nsw.edu.au

Holy Trinity is a co-educational Catholic school providing a warm and nurturing learning environment for students from Kindergarten to Year 10.

Inverell Public School

PO Box 34
Henderson Street, Inverell 2360

Ph: 6722 3072
Fax: 6722 4324

Email: inverell-p.school@det.nsw.edu.au
Website: www.inverell-p.schools.nsw.edu.au

Inverell Public School Provides education to children K to Year 6. Striving to assist each student to achieve their full academic, creative, sporting and social potential.

Ross Hill Public School

Andrew Street, Inverell 2360

Ph: 6722 2475
Fax: 6722 5806

Email: rosshill-p.school@det.nsw.edu.au
Website: www.rosshill-p.schools.nsw.edu.au

Ross Hill Public School is a dynamic, child-centred school that encourages every student from Kindergarten to Year 6 to achieve to their full potential.

Yetman Public School

Warialda Street, Yetman 2410

Ph: (07) 4675 3150
Fax: (07)4675 3102

Email: yetman-p.school@det.nsw.edu.au
Website: www.yetman-p.schools.nsw.edu.au

Yetman Public School enables students K to Year 6 to learn from each other in a caring environment.

SECONDARY SCHOOLS

Holy Trinity Catholic School

Moore Street, Inverell 2360

Ph: 6722 4066

Fax: 6722 2116

Email: info@holytrinity.nsw.edu.au

Website: www.holytrinity.nsw.edu.au

Holy Trinity is a co-educational Catholic school providing a warm and nurturing learning environment for students from Kindergarten to Year 10.

Inverell High School

Brae Street, Inverell 2360

Ph: 6722 3777

Fax: 6722 5829

Email: inverell-h.school@det.nsw.edu.au

Website: www.inverell-h.schools.nsw.edu.au

Inverell High School excels in academics, sport and cultural activities, student leadership and parent participation.

We live by our mission statement, "Proud to provide excellent standards in a caring and stimulating environment".

Contendo Procedere – Strive to Achieve.

Macintyre High School

Swanbrook Road, Inverell 2360

Ph: 6722 1555

Fax: 6722 5831

Email: macintyre-h.school@det.nsw.edu.au

Website: www.mhsinverell.com.au

Macintyre High School offers an extensive curriculum to cater for the needs of all students within a comfortable and supportive environment.

TERTIARY EDUCATION

Inverell Community College – Northern Inland Inc.

42 – 44 Campbell Street, Inverell 2360

Ph: 6721 3656

Fax: 6721 3660

Email: inverell@communitycollegeni.nsw.edu.au

Website: www.communitycollegeni.nsw.edu.au

Community College provides adult education through accredited vocational training in addition to hobby and leisure courses for Inverell and the surrounding area.

New England Institute of TAFE – Inverell Campus

Evans Street, Inverell 2360

Ph: 6721 9000

Fax: 6721 9011

Website: www.newengland.tafensw.edu.au

Inverell Campus offers courses reflecting both local and state-wide needs in construction, automotive, welding, business services, retail, gem faceting, screen and film, welfare, nursing, childcare and general education.

EMPLOYMENT

BEST Employment Ltd

PO Box 175
47 Campbell Street, Inverell 2360

Ph: 6722 2498
Fax: 6722 1658

Email: best@best.com.au
Website: www.best.com.au

BEST provides an extensive range of contracted employment and community services. BEST exists to provide quality assistance to disadvantaged service users and to provide direct social benefit within its communities.

Joblink Plus Inverell

PO Box 422
186 Byron Street, Inverell 2360

Ph: 6721 6200
Fax: 6722 3947

Email: inverell@joblinkplus.com.au

Joblink Plus is a community based non-profit job network provider. A free service to employers and job seekers including job matching, work for the dole, job pathways and community support programs. All clients are dealt with confidentially and compassionately.

For more information on the services provided please visit www.joblinkplus.com.au

Jobs Australia

17 Otho Street, Inverell 2360

Ph: 6722 4683
Fax: 6722 5424

Email: inverell@jobsaustralia.com.au

Jobs Australia offers a wide range of services and training for jobseekers including a professional FREE staff recruitment service for employers.

For more information on the services provided please visit www.jobsaustralia.com.au

OCTEC Limited

26 Vivian Street, Inverell 2360

Ph: 6721 5996
Fax: 6721 4115

Email: Inverell@octec.org.au

OCTEC Limited - Employment Service provides individuals with training and employment opportunities, assists industry recruitments and develops skilled workforces and local communities improve sustainability. For more information please visit www.octec.org.au

Speediestaffsolutions

104 Beardy Street, Armidale 2350

Ph: 6776 0105
Fax: 6772 5234

Servicing Inverell, Speediestaffsolution's mission is to improve the quality of life for our communities by providing exceptional employment, training and community building initiatives.

For more information on the services provided, please visit www.speediestaffsolutions.com.au

Youth Connections

C/O Jobs Australia
17 Otho Street, Inverell 2360

Mob: 0467 734 934

Email: youthconnections@each.com.au

Youth Connections assists young people aged 11-19 who are most at risk of leaving, or who have already left school without finishing Year 12 (or its equivalent) and haven't gained employment or enrolled in further education and/or training.

Open: 9am- 5pm Monday to Friday

SUPPORT SERVICES

ACE (AVO Compliance & Education Program)

PO Box 589, Inverell 2360

Ph: 0428 428 982

Email: acejustice21@yahoo.com

This program is an awareness and education program to promote understanding of Apprehended Violence Orders and Court processes with the aim of decreasing AVO breaches. The program strives to educate individuals about AVO's and the impacts of these court orders, while increasing awareness of violence and preventative actions through free workshops.

I C YOUTH – Inverell Community Youth Centre

18 Vivian Street, Inverell 2360

Ph: Rhonda - 0406 181 024

Email: icyouthcentre@gmail.com

I C YOUTH (Inverell Community Youth Centre) provides a safe inclusive meeting place that strives to support the youth of our community. We offer a variety of support, from; mentoring and chats, agencies & NGO referrals for specific assistance (i.e. for needs such as homelessness, conflicts, substance abuse, mental health, etc.), advocacy, social events and life skill development. All aspects of support endeavour to empower and encourage the well-being of our youth community.

Website: www.icyouc.org

Inverell Anti Violence Committee

PO Box 589, Inverell 2360

Ph: 6721 0855

Email: admin@ruraloutreach.net.au

Their aim is to promote awareness of the social and physical costs of violence, to inform the public of support agencies that can assist people affected by violence and to enable support agency collaboration in the prevention of violence. Meetings: Last Monday of every month at Rural Outreach & Support Service

Inverell Red Shield Community Centre

PO Box 81

45 Otho Street, Inverell 2360

Ph: 6722 3008

Providing community services in a pleasant, clean and friendly environment. Provision for clothing, furniture, mother's room, rest room, chapel quiet room and welfare counselling.

Linking Together Centre

PO Box 880

16 Waratah Avenue, Inverell 2360

Ph: 6722 3444

A community based centre supporting Inverell. Linking together and supporting resident's access to local government and community based services. The centre offers a number of diverse programs that entails the needs of the whole community.

The Benevolent Society Inverell

PO Box 636

63-65 Vivian St, Inverell 2360

Ph: 6721 6000

Fax: 6721 5670

Website: www.benevolent.org.au

The Benevolent Society is a not-for-profit, non-religious organisation who aim to help improve the wellbeing of children, young people, families and older Australians and change their lives through support and education.

The Benevolent Society has 2 programs in Inverell: The Personal Helper's & Mentor's Program– provides support and assistance to participants whose lives have been severely affected by a mental illness. Brighter Futures – provides a parent with support and services that will assist the parent to give children a good start in life.

The Legacy Club of Inverell Inc.

PO Box 231
Oliver Lane, Inverell 2360

Ph: 6722 1945
Fax: 6722 1945

Email: inverell.legacy@gmail.com

Welfare and advocacy service available to the families of incapacitated and deceased veterans. Assistance with War Widow Pension applications and all DVA matters.

Website: www.legacy.com.au/inverell



Rural Outreach & Support Services

PO Box 589, Inverell 2360

Ph: 6721 0855

Email: admin@ruraloutreach.net.au

Our aim is to identify, develop and implement a range of applicable life skills assistance through workshops and individual consultations to assist community in the prevention of homelessness.

We provide support to vulnerable, marginalised and disadvantaged people in the community, including men, women, families and young people from all backgrounds.

Our staff provide Support Groups, Information/Advice, Advocacy, Homelessness Services, Life Skills Workshops and Community Project Involvement.

St Vincent de Paul Society

PO Box 297
31 Oliver Street, Inverell 2360

Ph: 6722 2229

The Inverell branch runs an opportunity shop which is staffed by volunteers. This raises money for people in financial or other difficulty. Drug and alcohol services, Accommodation. Emergency services-disasters. Provision of clothing, furniture, food and budget counselling.

Stronger Together – Group for Women

Ph: Sarah Rees - 0487 120 099

Email: sarsamkat@hotmail.com

A non-judgemental group for women who are looking for friends and support through any situation they are going through.

Inverell Family and Youth Support Service

PO Box 990
3 Glen Innes Road, Inverell 2360

Ph: 6720 8850
Fax: 6722 4099

Email: admin-ifyss@pathfinders-aus.org

Inverell Family and Youth Support Services (IFYSS) provide many vital services to the community, below is a breakdown of these services.

The Aboriginal Family Worker is available 5 days a week to provide free and confidential support services for families with children aged 0-8 years. Advice on activities and programs to enhance the skills and confidence of parents/carers with the aim of improving educational, social and health outcomes for their children. A play group is held at Ashford every Wednesday (excluding school holidays).

IFYSS understands that raising a family in today's world can be challenging, and at times, parents need extra support.

Services provided: advice and information (child's behaviour, relationship issues, separation, financial difficulties, living skills), referral and access to other services that can assist, structured parenting programs to develop parenting confidence and skills and improve child/parent relationship. Both male and female Adolescent Support Workers are available.

The Adolescent Support Worker aims to empower 13-25 year olds to achieve greater independence, self belief, coping skills and positive outcomes in their lives. Services provided: information and advice to young people and their families (school, relationships, bullying, health issues, alcohol/drugs, safety, employment and training) referral and access to other services that can assist, life skills education (self esteem, social skills, budgeting), structured parenting programs for young parents and for parents wanting to improve their relationship with their teenage children.

HEALTH CARE SERVICES

MEDICAL SERVICES

Alcohol and Other Drugs Counselling

PO Box 701
Inverell Community Health
Swanbrook Road, Inverell 2360

Ph: 1300 660 059

Qualified counselling available for all types of dependency, including alcohol and other drugs. Develops and implements a range of strategies to minimise the incidence of alcohol, drugs and related harm in the community.

Ashford Doctors Surgery

6 Kneipp Street, Ashford 2361

Ph: 6726 2000
Fax: 6726 2000

Aboriginal Chronic Care Clinic - every three months
Baby Clinic - every second Wednesday
Breast Screening - every two years
Day care - every Tuesday
Doctors service - Monday, Thursday and Saturday
Dressing and Other Nursing Services – Monday, Wednesday and Friday
Foot care - third Tuesday each month.
Home nursing visits - Monday, Wednesday and Friday
Women's health clinic - 3 times a year

Asthma and Respiratory Education

PO Box 701
Inverell Community Health
Swanbrook Road, Inverell 2360

Ph: 6721 9600
Fax: 6721 9580

Information and education regarding a wide range of issues concerning asthma and respiratory problems.

Audiometry Clinic

PO Box 701
Inverell Community Health
Swanbrook Road, Inverell 2360

Ph: 6721 9600
Fax: 6721 9580

Provides hearing assessment and education to the community - all ages, as well as industrial testing. Pensioners with a hearing aid need to go through the Commonwealth Hearing Service.

Blood Bank

Ph: 13 14 95

Blood donations organised by the Red Cross.

Childbirth Education Classes

Inverell Health Service
Swanbrook Road, Inverell 2360

Ph: 6721 9532

Enables pregnant women and their partners to understand pregnancy and childbirth, parent craft issues such as breastfeeding and settling techniques in the immediate post-partum period.

Chiropractor – Wendy Thompson

138 Otho Street, Inverell 2360

Ph: 6722 3022

Email: admin@inverellchiro.com.au

Member of the Chiropractors Association of Australia and Australian Spinal Research Foundation Registered Department of Veterans Affairs provider. Work cover approved chiropractor.

Department of Education – Hearing Support Teacher

C/O Inverell Public School

PO Box 34, Inverell 2360

Ph: 6722 3072

Fax: 6722 4324

Contact: Ms Heather Russell

Available to assist and provide information about all hearing losses including otitis (glue ear) to all local preschools, schools and interested parental groups. Also available to assist any child and their family, teachers and school who have any form of hearing loss from birth to 18 years of age.

Diabetes Education

PO Box 701

Inverell Community Health

Swanbrook Road, Inverell 2360

Ph: 6721 9600

Fax: 6721 9580

Information and education regarding a wide range of issues concerning diabetes.

Dietetics

PO Box 701

Inverell Community Health

Swanbrook Road, Inverell 2360

Ph: 6721 9600

Fax: 6721 9580

Information and advice about a wide range of nutrition and dietary issues for people of all ages.

Fernhill Wellbeing Centre

Ph: 6721 3350

Email: fernwell@bigpond.net.au

Reach your highest health potential naturally, Live blood analysis, Computerised meridian testing, Herbal medicine
Clinical Nutrition, Homeopathy, Iridology, Weight-loss programs

Website: www.fernhillwellbeingcentre.com.au

Inverell Alcoholics Anonymous

159 Otho Street, Inverell 2360

Contact: Jim

Ph: 0481 283 149

Contact: Tony

Ph: 0408 694 314

Sadly alcohol and drug problems affect 6 - 7% of our population. The problem does not discriminate against or respect social, racial, financial or religious boundaries.

Meetings: 7.30pm Thursday at the Senior Citizens Club

12.30pm Monday at Life Inverell Church

Inverell Diagnostic Imaging

35 Otho Street, Inverell 2360

Ph: 6722 4248

Inverell Hospital

Swanbrook Rd, Inverell

Ph: 6721 9500

A medium-sized regional public hospital with an emergency department and community health center.

Inverell Medical Centre

113 Swanbrook Road, Inverell

Ph: 6722 2855

Inverell Medical Centre offers a comprehensive range of community health services.

Inverell Physiotherapy & Sports Injury Centre

100 Old Bundarra Road, Inverell 2360

Contact: Desie Kearsey

Ph: 6722 2583

Ph: 0429 354 075

Ph: 0427 215 535

5 days per week: 8am - 5pm.

Tuesday and Friday: 3pm - 6pm, 8 Hope Street, Warialda

New England Speech Pathology

91 Brae Street, Inverell 2360

Contact: Linda Foskey

Ph: 0402 120 882

Certified Practicing Speech Pathologist.

Website: www.newenglandsspeechpathology.com.au

Email: info@newenglandsspeechpathology.com.au

New England Chiropractic

24a Vivian Street, Inverell 2360

Ph: 6721 1500

Fax: 6721 1522

Website: www.nechiropractic.com.au



Email: drjkinahan@nechiropractic.com

NEVAT

35 Albury Street, Ashford 2361

Ph: 6725 4448

Ph: 0428 254 448

Providing free air transport to medical appointments in Tamworth, Armidale and Toowoomba.

Occupational Therapy

PO Box 701
Inverell Community Health
Swanbrook Road, Inverell 2360

Ph: 6721 9600
Fax: 6721 9580

Assesses and supports the daily living skills of adults and advises on aids and home modifications to facilitate independent living.

Oncology Support and Palliative Care

PO Box 701
Inverell Community Health
Swanbrook Road, Inverell 2360

Ph: 6721 9600
Fax: 6721 9580

Aims to provide support to clients who are having treatment for cancer. Aims to provide quality symptom management for terminally ill patients and bereavement support to patients who are having treatment for cancer.

Pathology – Douglass Hanley Moir

Swanbrook Road, Inverell 2360

Ph: 6722 4303
Fax: 6721 3369

- Home Visits
- Water Testing – Dams, Bores and Tanks
- DNA Paternal Testing
- Urine Drug Screening for corporate employment and custody

Pathology New England

73-75 Otho St, Inverell 2360

Ph: 6722 1747

Physiotherapist – Wendy Alexander

132 Otho Street, Inverell 2360

Ph: 6721 1566

- Sporting injuries
- Foot problems
- Discomfort in your neck, back and shoulders.
- Clinical Pilates
- Rehabilitation after surgery
- Car accidents

Ross Street Doctors Surgery

4 Ross St, Inverell 2360

Ph: 6721 2763

Drs L and B Thatcher.

Speech Pathology Services

PO Box 701
Inverell Community Health
Swanbrook Road, Inverell 2360

Ph: 6721 9600
Fax: 6721 9580

Can identify, diagnose and treat language, speech, voice and stuttering problems in adults and children. Also help with some feeding and swallowing problems.

St Elmo Medical Practice

27 Oliver St, Inverell

Ph: 6722 1999

Dr. Robert Palmer.

MENTAL HEALTH SERVICES

Anglicare Northern Inland Counseling

PO Box 1068
55 Henderson Street, Inverell 2360

Ph: 6722 2766
Fax: 6722 4202

Email: acsinverell@bigpond.com

All types of counselling (including gambling) available to people of all ages without regard to background or belief. Counsellors are fully trained, accredited and confidential. Their skills are updated each year. Counsellors are available 9am-5pm from Monday to Friday and at other times by appointment. An answering machine is available for messages at all times.

Inverell Red Shield Community Centre

PO Box 81
45 Otho Street, Inverell 2360

Ph: 6722 3008
Ph: 6721 0443
Fax: 6721 3423

Providing community services in a pleasant, clean and friendly environment. Provisions for clothing, furniture, a mother's room, rest room, chapel quiet room and welfare counselling.

Inverell Psychology

94 Brae St , Inverell 2360

Ph: 6721 1911

Julie aims to help her clients live their best possible lives, and works with people of all ages with a range of presenting problems. Her areas of professional interest include treatment of anxiety and depression, holistic mental health care, trauma therapy, and child development/behaviour assessment and treatment, including autism spectrum disorders.

Life Foundations

44 Campbell Street, Inverell 2360

Ph: 6721 0561

Email: leonie@lifeinverell.com.au

A not-for-profit organisation – auspiced by Life Inverell. Life Foundations mission is to empower individual people, families and the community by building emotional, physical and spiritual health. Services provided include Recycling Shop, Counselling, Life Coaching, Chaplaincy, Support Services, Community Welfare programs, and Care force Lifestyle programs and a weekly pantry. All donations and shop proceeds are invested into our community.

Mental Health Services

PO Box 701
Inverell Community Health
Swanbrook Road, Inverell 2360

Ph: 6721 9600

Fax: 6721 9580

Providing a service to individuals suffering from emotional distress or mental illness e.g. bereavement, stress, behaviour problems, crisis, depression, relationship problems and anxiety.

SENIORS - ACCOMMODATION, CARE & SUPPORT SERVICES

Coinda Retirement Community

15-21 Ross Street, Inverell 2360

Ph: 6722 5053

40 Self Care Retirement Units.

Dementia and Carer Support Services

PO Box 846
48 Oliver Street, Inverell 2360

Ph: 6722 5888

Fax: 6722 5129

Email: sandy@invhacc.com.au

Provide services for people with memory loss and their carers in the Inverell district. The 'Golden Club' day care provides socialisation support and respite for carers and the 'Companion Program' provides social support within the home and community.

Family and Community Services – Aging Disability and Home Care

15 Oliver Street, Inverell 2360

Ph: 6773 0300

Fax: 6722 4078

Helping older people, carers and people with disabilities to live independently in their own homes, rather than unnecessarily moving into care. Provides therapy services, such as physio and speech, for people who are physically disabled.

Website: www.humanservices.nsw.gov.au

Inverell Senior Citizens Meals on Wheels

PO Box 620
159 Otho Street, Inverell 2360

Ph: 6722 1951

Fax: 6722 1036

Inverell Meals on Wheels provides a hot delivered meal Monday to Friday. Frozen meals are provided for weekend meals and for people living out of town. Part of the Home and Community Care Program, providing meals for anyone of age who has a condition that makes the preparation of meals difficult. Always seeking enthusiastic volunteers to help deliver meals weekly. Office Hours: Monday to Friday: 8am-1pm

Kirinari Community Services

Shop 4 Byron Arcade, Evans Street, Inverell 2360

Ph: 6721 5011
Fax: 6721 5012

E-mail: trudi.darby@kirinari.com.au or
peter.collins@kirinari.com.au

Offering Domestic, Respite, Personal Care, Shopping, Home and Garden Maintenance, Social and Post Acute (Hospital Care). Veterans or private support also available.

Website: www.kirinari.com.au

Inverell Home Support Program

48 Oliver Street, Inverell 2360

www.inverellhsp.com.au

Social Activities
Ph: 6722 5422

Assisting frail aged and/or the elderly and their carers live independently in the community by providing transport, social activities and dementia services.

Social Activities
Email: robin@inverellhsp.com.au

Community Transport:
Ph: 6722 5853

Community Transport:
Email: mark@inverellhsp.com.au

Dementia & Carer Support Services:
Ph: 6722 5888

Dementia & Carer Support Services:
Email: sandy@inverellhsp.com.au



McLean Care Ltd

PO Box 360
67 Killean Street, Inverell 2360

Ph: 6722 2655
Fax: 6722 2025

Email: admin@mcleancare.org.au
Website: www.mcleancare.org.au

The McLean Retirement Village, set amongst beautiful prize winning lawns and gardens, is committed to caring and provides a comprehensive range of aged care services. Offering 4 levels of accommodation, each area provides specialised care. The Village comprises of a Nursing Home, Hostel, Dementia specific units, independent living units and villas as well as offering community aged care services.

The Legacy Club of Inverell Inc.

PO Box 231
Oliver Lane, Inverell 2360

Ph: 6722 1945
Fax: 6722 1945

Email: inverell.legacy@gmail.com
Website: www.legacy.com.au/inverell

Welfare and advocacy service available to the families of incapacitated and deceased veterans. Assistance with War Widow Pension applications and all DVA matters.



Inverell Combined Pensioners Club

PO Box 347, Inverell 2360

President: Wally Fitzgerald
Ph: 6722 4860

Caters for all pensioners, providing information and help with pensions. Also some outings from time to time.
Meetings: First Thursday of each month upstairs at the RSM

ORGANISATIONS, CLUBS & GROUPS

ARTS, MUSIC & DRAMA

Inverell Art Gallery – Art Classes

PO Box 329
5 Evans Street, Inverell 2360
Ph: 6722 4983
Website: www.inverellartgallery.com

The Inverell Art Gallery is a community gallery operated by the Inverell Art Society. It holds regular exhibitions throughout the year featuring both local and visiting artists.
The Gallery also operates a gift shop where original local arts and crafts can be purchased.
Please phone the Art Gallery for more information on art classes.

Inverell Art Society

PO Box 329
5 Evans Street, Inverell 2360
Ph: 6722 4983
Email: invar@bigpond.com.au

The Inverell Art Society operates the Inverell Art Gallery. The gallery holds regular exhibitions, runs various classes and sells the art and craft of local artists.
Opening Hours: Monday to Friday: 10am-5pm
Saturday: 10am-1pm
Website: www.inverellartgallery.com.au

Art Life Studio Gallery

56 Otho Street, Inverell 2360
Artist/Owner/Operator: Andrea Horwood
Ph: 0428 458 706
Email: creativepeople.net.au

A creative space in the heart of Inverell offering lessons, exhibitions and sales.

Jenny Fox School of Music and Drama

Ph: 0431 063 864

Inverell Cultural Group

PO Box 1110, Inverell 2360
President: Les Moulds
Ph: 6722 1374
Secretary: Chris Newbiggin
Ph: 6722 1909

The Cultural Group is affiliated with Arts NSW and Arts North West. It serves as an umbrella group for cultural organisation and individuals seeking to conduct activities within the Inverell region.
Meetings: Every third month in the Community Room at the Inverell Library

The Inverell Music Centre

PO Box 1242
79 Moore Street, Inverell 2360
Ph: 6722 2023
Email: inverell@necom.org.au

Music lessons for Flute, Clarinet, Saxophone, Cello, Brass, Piano, and Singing. Music therapy programs are also available.

The Inverell Singers

Contact: Mark
Ph: 0458 746 843
Contact: Anthony
Ph: 0400 994 046

Local, non auditioned community choir.
All welcome – 16 years and up (unless accompanied by adult)
Venue: Inverell Music Centre, 79 Moore Street, Inverell
Times: 7pm – 9pm Thursdays



Sapphire City Concert Band

64 Short Street, Inverell 2360

President: Nicky Croft
Ph: 6722 2305
Secretary: Ann Tubb
Ph: 6722 1039

The Band comprises of adults and high school age students. New members are always welcome. Musicians perform for the benefit of the community by providing entertainment at civic functions and special events.



Email: anntubb@hotmail.com

Inverell Pipe Band Inc.

PO Box 793
64 Ring St, Inverell 2360

Contact: Warren Purvis
Ph: 0423 188 762

The Inverell Pipe Band is a social pipe band who promotes and embraces family and community spirit while maintaining a professional and fun band environment. They offer structured learning in both bagpipes and drum by tutors within the band. The band and its members are available for hire. Everyone is welcome.

Practice: Every Thursday night 7.00pm at the Inverell Scottish Hall

Inverell Eisteddfod Society

PO Box 1081, Inverell 2360

Secretary: Jenny Campbell
Ph: 6721 1917

New members are always encouraged to attend.
Meetings: Fourth Wednesday of each month 7pm in the Inverell High School Common Room

CHURCH SERVICES

All Saints - Gilgai

Contact: Reverend Adam Draycott
Ph: 6722 3179

Services: Second and Fourth Sundays 8.30am

Baptist Church

Wade Street, Inverell 2360

Ph: 6722 1081

Sunday Service: 10am
Youth Group: Friday 7pm
Home Group: Wednesday 7pm
Prayer Night: Thursday 6pm

Bonshaw Church Service

Contact: Reverend Adam Draycott
Ph: 6722 3179

Please contact Reverend Adam Draycott to arrange services. Services held by arrangement

Church of Christ

Contact: Alan Rowlands
Ph: 6722 2100

Sunday Service: 10.30am
Bible Study: Wednesday 7.30pm

Contact: Len Buttsworth
Ph: 6722 5275

Danthonia Bruderhof

4188 Gwydir Hwy Elsmore 2360

Contact: 6723 2213

Families of Faith

Contact: Graham and Heather Kerridge

"Church at the drop of a hat"

Mob: 0458 767 995

Graman Community Church

Contact: Reverend Adam Draycott
Ph: 6722 3179

Services: Third Sunday at 11am

Inverell Christian Centre

Fernhill Rd, Inverell 2360

Inverell Christian Centre lists import information and events on their website.

Contact: Pastor Paul Hattingh
Ph: 6722 1965

Sunday Service: 10am and 6:30pm

Email: www.inverellchristiancentre.com

Jehovah's Witness

Kingdom Hall, 81/87 Clive Street, Inverell 2360

Meetings:
Tuesday 7.30pm
Sunday 10am

Ph: 0428 871 346
Ph:6723 0284

Liberty Christian Church (Apostolic Church)

Unit 1- 60 Oliver St, Inverell 2360

Contact: Pastor Greg Thomas

Ph: 6721 0637

Ph: 0411 499 653

Email: gtho6922@bigpond.net.au

Website: www.libertychristianchurch.com.au

- Church Services
- Children's Ministry
- Youth Ministry
- Community Care
- Counselling
- Marriage and Funeral Services

Sunday Service: 10am

Youth Group: Friday 7.30pm

Life Inverell

26 Warialda Road, Inverell 2360

Contact: Chris and Lea Russell

Ph: 6721 0561

Fax: 6721 0562

Email: office@lifeinverell.com

Sunday Service: 10am

Website: www.lifeinverell.com



Presbyterian Church

94 Vivian Street, Inverell 2360

Contact: Reverend Phil Wiedemann

Ph: 6721 0511

Email: office@inverell.presbyterian.org.au

Sunday School, Playgroup and Youth Programs run throughout the school term.

Church Service Times:

Contemporary 9:15am and 6pm Sunday

Traditional 9:30am Sunday

Sacred Heart Catholic Church

81 Vivian Street, Inverell 2360

Contact: Father Roel

Ph: 6722 1103

Fax: 6721 1440

M: 0427 221 103

Email: sacredhinv@bigpond.com

Sacred Heart Parish Inverell is a vibrant and inclusive catholic church. All latest news and upcoming events are listed on the Sacred Heart Catholic Church website.

Service Times: Saturday 6pm and Sunday 9am

Website: www.sacredheartinverell.org.au



Salvation Army

Vivian Street, Inverell 2360

Ph: 6722 3008 – Family Store

Ph: 6721 0445 – Office

Fax: 6721 3423

Email: inverell.corps@aue.salvationarmy.org

The Salvation Army helps people in need through a wide range of community programs.

The Inverell branch runs an opportunity shop which is staffed by volunteers. This raises money for people in financial or other difficulty

Sunday Service 9.30am

Sapphire City Church – Loving God, Building People

PO Box 59
21 Mansfield Street, Inverell 2360

Contact: Pastors Jason and Glenda Hare
Ph: 0413 320 681

A member of Christian Outreach Churches, where you are welcome.
Family services, events, ministries and more, everyone can find their place.

Sunday Family Service: 9.30am

Seventh Day Adventist Church Inverell

PO Box 837
Cnr Glen Innes Road and Bennet Street, Inverell 2360

Contact: Pastor John Lang
Ph: 0414 909 630

Website: www.inverell.adventist.org.au

Bible Study Group: 10am Saturday
Service: 11.30am Saturday

South Inverell Fellowship

23 Waratah Ave Inverell

Contact: Phil and Di Whan

Ph. 67215564

Services: Sundays 2pm

St Augustine's Anglican

33 Rivers Street, Inverell 2360

Contact: Reverend Adam Draycott
Ph: 6722 3179

Sunday Service: 7:30am, 9.30am, 6.30pm

St Columba's - Delungra

Contact: Reverend Adam Draycott
Ph: 6722 3179

Services: Second and fourth Sundays 11am

St Marks - Ashford

Contact: Reverend Adam Draycott
Ph: 6722 3179

Services: First and Third Sundays 8.45am

Uniting Church

4 Rivers Street, Inverell 2360

Contact: Reverend Jean Bell
Ph: 6721 1055
Mob: 0407 625 410

Services:
Sunday - 9am
Wednesday - 1pm

Email: leannbell@bigpond.com

HOBBIES & SOCIAL GROUPS

Inverell Breakfast Toastmasters Club

PO Box 624, Inverell 2360

President: Carol South
Ph: 6721 1420

Toastmasters encourage people to be confident in social and professional settings, by allowing them to practice their speaking, presentation and leadership skills in a friendly supportive environment.

Inverell District Family History Group

PO Box 367
Room 3 135 Otho St, Inverell 2360

President: Ann Plumb
Ph: 6722 1851
Secretary: Muriel Resta
Ph: 6722 1893
Mob: 0428 221 893

Since 1984 enthusiastic members have been researching and collecting local and family history resources; for the benefit of both members and visitors.

Website: inverellfamilyhistory.org.au

Research Centre Open: 10am-3pm
Monday, Wednesday and Friday

Email: info@inverellfamilyhistory.org.au

Friends of the Inverell Library

C/O Inverell Shire Library
55-59 Campbell Street, Inverell 2360

Ph: 6728 8130

This group organises fundraising and cultural activities based at the Inverell Library. This group aims to promote community awareness of the library's facilities and to raise funds. New members are welcome. Membership fee is \$5.00

Meetings: First Wednesday of each month 5pm at the library

Inverell Community Men's Shed

PO Box 485
Inverell Show Ground, Tingha Rd, Inverell 2360

Ph: 6722 3013

Email: mensshed1@bigpond.com

A place to learn new craft skills and enjoy the company of others.

Website: invermensshed.awardspace.info

Open: 9am-12pm
Monday, Wednesday, Friday and Saturday.

Inverell Genealogical and Historical Society Inc.

PO Box 1178, Inverell 2360

Contact: Norma Clay
Ph: 6722 1659

Email: ighsinc@inverell.nsw.au

This Society assists in researching Inverell's local family history a supplying your complete family history that can be passed on to future generations. Everyone is welcome.

Meetings: Every Tuesday morning at the Inverell Library

Website: www.inverell.nsw.au

Inverell Kennel and Training Club

PO Box 890, Inverell 2360

Contact: Ms Pamela Bennett
Ph: 6723 1235

Email: doreen312@bigpond.com

Promoting responsible dog ownership. New members are always welcome.

Meetings: 7.30pm First Tuesday of March, May, July, then each month until December

Inverell Laurel Club

PO Box 231
Oliver Lane, Inverell 2360

Ph: 6722 1945
Fax: 6722 1945

Email: inverell.legacy@gmail.com

A social group for widows who are eligible to enrol with Inverell Legacy.

Meetings: Fourth Wednesday of the month

Inverell Model Aircraft Club

“Roblea” 1147 Ashford Road, Inverell 2360

Contact: Garry Leach
Ph: 6722 3736
Conatct: Michael Newberry
Ph: 6721 4034

Visitors welcome.

Every fine Sunday from 9am 11km from Inverell

Inverell Poultry Club

2 Hindmarsh Street, Inverell 2360

Secretary: Leonie Persell
Ph: 6722 3543

A group for people interested in the breeding and showing of purebred poultry.

Meetings: First Wednesday of each month at 7:30pm

Inverell Social Bird Keepers Group

‘Sunnybrae’ 95 Short Street, Gilgai 2360

Contact: Trevor Woodham
Ph: 6723 1388

Meetings: Second week of each month 7pm at the Inverell Show Ground



Sapphire City Markets

C/O Inverell Lions Club
PO Box 335, Inverell 2360

Contact: Philip Beeton or Jim Belford
Ph: 0487 804 488

Inverell Lions run the Sapphire City Markets on the first and third Sunday of each month on the banks of the Macintyre River in Campbell Park. Markets start at 6.30am.



Sapphire City Model Flying Club

PO Box 1231, Inverell 2360
8 Hall Street, Gilgai 2360

Secretary: Fred Bliefnick
Ph: 6725 4302

New members are welcomed, please contact the Secretary.
Every Sunday 10am- 3pm at L.H.P.A property next to equestrian centre in Cameron lane.
Last Sunday of each month 10am-3pm at Inverell East Airport, Glen Innes Rd, Inverell

Sapphire City Motor Sports Club Inc.

Contact: Brett Parker

Ph: 0429 009 522

Email: scmotorsportsclubnews@gmail.com

The Sapphire City Motor Sports Club is a new local club. Meetings are held once a month. A major event is held annually called "Motor Mania", a Display/Picnic day.
The club has a membership mixture of men and women of all ages as well as all types of cars and bikes. New members are invited to join.



Stronger Together – Group for Women

Contact: Sarah Rees

Ph: 0487 120 099

Email: sarsamkat@hotmail.com

A non-judgemental group for women who are looking for friends and support through any situation they are going through.

Inverell Scout Group

PO Box 239, Inverell 2360

Ph: 6722 1222

An organisation which provides young people with outdoor activities and the opportunity to develop leadership skills in a fun way.
6 – 11 years (Joeys and Cubs) Wednesday: 6:30pm-8pm
11 – 15 years Tuesday: 6:30-8pm

Inverell Girl Guides

PO Box 635, Inverell 2360

Contact: Beth Hamilton
Mob: 0428 224 118

Inverell Girl Guides is part of a universal organisation that aims to enable girls and young women to grow into confident, self respecting, responsible community members.

Inverell Show Society

PO Box 116, Inverell 2360

Ph: 6722 3409
Fax: 6722 4071

This group plans and runs the Inverell Show and all its events including the Sapphire City Spurs Camp Draft during the Sapphire City Festival in October.
Website: www.inverellshowsociety.com.au

Office Hours: Friday 10-4pm

Email: inverellshowsoc@bigpond.com

ORGANISED CLUBS

Apex Club of Inverell

PO Box 246, Inverell 2360

President: Matt Verri

Secretary: Patrick Pordage
Ph: 0434 531 508

Email: inverellapex@gmail.com

Community service club for under 45's. Monthly dinner meetings involving business skills, personal development and fellowship. The members also undertake community service projects, fundraising and family activities.

Ashford Lions Club

PO Box 79, Ashford 2361

President: Rachael Rogers
Ph: 0429 668 590

Treasurer: Trudy
Ph: 0488 566 816

Ashford Lions Club is involved in a range of community services throughout the Ashford region. The club also provides mentoring and guidance to the next generation of Lions through the Leo program.

Meetings: Second Wednesday of each month 6:30pm at the Ashford Bowling Club, 29 Bala Street, Ashford.

Delungra District Development Council

Secretary: Lorna Ogilvie
Ph: 6732 1831

Meetings: First Thursday of each month 7.30pm at the Delungra Bowling club.

Services for the community are waste depot management, street and park mowing, chemical drum collection, park toilets and playground cleaning. The DDDC assist with Clean Up Australia Day, run Australia Day Celebrations, Christmas Carnival and assist with Anzac Day events.

Inner Wheel Club of Inverell

PO Box 64, Inverell 2360

Email: iiw.au.inverell@gmail.com

Meetings: Third Wednesday of each month 7.30pm at the Senior Citizens Club Rooms, 159 Otho Street, Inverell.

Inner Wheel is part of one of the largest women's organisations in the world. Friendship, personal service and international understanding are our aim. Membership is by invitation. Please contact if you would like more information or are interested in joining.

Inverell East Rotary Club

PO Box 472, Inverell 2360

President: Tim Newberry

Secretary: Ros Scoble

Email: secretary@inverelleastro.org.au

Website: www.inverelleastro.org.au

Rotary's aim is to encourage service to the community and individuals, to promote high ideals in personal, business and community life and to foster good international relations and peace. The local branch of Rotary is involved heavily in many aspects of community life in Inverell.

Meetings: 6pm Tuesdays at the Tatts Hotel

Inverell Lions Club Chartered 1953

PO Box 335, Inverell 2360

President: Peter Kearsey
Ph: 6722 2583 Mob: 0427 005 015

Secretary: Rick Lange
Ph: 0401 425 836

Email: inverellionsclub@gmail.com

Website: <http://inverell.nsw.lions.org.au/>

Meetings: Second and fourth Monday of each month, 7pm at the Australian Hotel

Inverell Lions is a service club that is involved in fundraising, helping people and building local community projects. The Inverell Lions run the Sapphire City Markets on the first and third Sunday of each month, on the banks of the Macintyre River in Campbell Park starting 6.30am, for more information please contact Jim Belford on 0459 367 222 or Facebook: Inverell Sapphire City Markets. Money is also distributed into various Lions Foundations such as – Save Sight, Public Health Care Foundation, Diabetes Foundation, Visual Independence, Cord Blood Foundation, Medical Research, Australian Spinal Cord Fellowship, Australian Lions Childhood Cancer Research, Australian Children’s Mobility, Australian Lions Drug Awareness, Lions Prostate Cancer Research & Treatment Project, Pre-school Autism Education & Therapy Project, Youth Exchange Program and the Youth of the Year.

Inverell Macintyre Lions Club

PO Box 603, Inverell 2360

President: Wayne Mitchell
Ph: 0429 672 110

Secretary: Bill Sutton

Email: inverell-macintyre@lionsdistrict201n1.org.au
Website: www.lionsclubs.org.au/201n1/lionsclubs

Lions Clubs aim to serve and help people in our community who are less fortunate, while having fun and enjoying fellowship. Community minded people are welcome to enquire about their activities and membership.

Meetings: First and Third Tuesday of each month 7pm at the Austral Band Hall, Campbell Street, Inverell.

Inverell Red Cross

PO Box 797, Inverell 2360

President: Colleen Nancarrow
Ph: 6722 1811

Meetings: First Monday of each month 2pm at the Art Gallery

The Red Cross is a humanitarian organisation that holds functions and raises funds. Funds go towards helping people in need in the community and internationally.

Inverell Rotary Club

PO Box 356, Inverell 2360

President: Neil Eigeland

Secretary: Barry Young
Ph: 6722 2467

Email: secretary@rotaryinverell.org.au
Website: www.inverellrotary.org.au

The Inverell Rotary Club is a part of an international network of business, professional and community leaders who strive to make the world a better place through practical efforts.

Through Rotary, the reward of "paying it forward" unites men and women from different backgrounds, cultures, religious and political beliefs the world over, allowing ordinary people to do extraordinary things while aiding the local community.

Meetings: Every Thursday 6pm at the RSM

Inverell RSL Women's Auxiliary

President: Helen Anstee
Ph: 6722 5371

The Auxiliary works to raise money for the Inverell RSL Welfare work.

Meetings: Second Thursday of each month 9:30am
at the RSM Club

Inverell State Emergency Service

PO Box 815
52 Burtenshaw Road, Inverell 2360

SES is run almost entirely by volunteers, who respond to floods, storms and other emergency situations. In rural areas such as Inverell, the SES is also involved in bush search and rescue and many other duties.

Controller: Brian Parsons

Ph: 132 500

Inverell Torch Bearers for Legacy

PO Box 231
25 Byron St, Inverell 2360

A volunteer group who run the Legacy Op Shop and raise funds for Inverell Legacy. Volunteers are welcome and required.

Meetings: Second Wednesday of each month upstairs at the RSM

Ph: 6722 1945
Fax: 6722 1945



Email: inverell.legacy@gmail.com

Life Foundations

44 Campbell Street, Inverell 2360

A not-for-profit organisation – auspiced by Life Inverell. Life Foundations mission is to empower individual people, families and the community by building emotional, physical and spiritual health. Services provided include Recycling Shop, Counselling, Life Coaching, Chaplaincy, Support Services, Community Welfare programs, and Care Force Lifestyle programs and a weekly pantry. All donations and shop proceeds are invested into our community.

Ph: 6721 0561

Email: foundations@lifeinverell.com

National Serviceman's Association Northern Tablelands and New England Sub Branch

Secretary: Olive Hungerford
Ph: 6722 3177

Meetings: Second Sunday of each month 10.30am at the Inverell RSM

Quota Club Inverell

PO Box 824, Inverell 2360

President: Suzanne O'Brien

Ph: 6722 2952

Secretary: Shirley McIntyre

The Quota Club works for the deaf and disadvantaged women and children. The Quota Club is a local organisation and money raised in the community stays in Inverell.

Meetings: Second Tuesday of each month 7pm at the RSM

RSL of Australia NSW Branch Inverell Sub Branch

PO Box 906

Oliver Lane, Inverell 2360

Ph: 6722 2987

Email: admin@inverellrslsubbranch.com.au

The Inverell RSL Sub Branch is a service organisation committed to helping those who are less well off, visiting ex-service personnel in hospital and assisting ex-service persons who have or still are serving in the Australian and allied forces and in conflicts. The Sub Branch also provides informed advice for those who are seeking pension assistance.

Meetings: Second Saturday of each month 10.15am at the RSM (Excluding January)

RSPCA Inverell Branch

President: Ron Thorpe

Ph: 6722 4634

Treasurer: Allison Lane

Ph: 0419 408 041

The branch aims to provide subsidised de-sexing and vaccination programs to assist owners in the welfare of their animals. The branch also fosters out animals until they are able to be rehomed.

www.rspca.nsw.org.au

St Andrews Presbyterian Women's Association

30 Harland Street, Inverell 2360

Secretary: Jann Haley

Ph: 6722 1383

A women's service organisation within the Presbyterian Church. They raise money to support missionaries and the Bible Society. Members also visit sick and elderly members of the congregation, cater for special occasions in the Church and have fun together on social occasions.

Meetings: First Wednesday of each month 9.45am at the St Andrews Presbyterian Hall

The Legacy Club of Inverell Inc.

PO Box 231

Oliver Lane, Inverell 2360

Ph: 6722 1945

Fax: 6722 1945

Email: inverell.legacy@gmail.com

Legacy provides individual support and assistance to the families of incapacitated and deceased veterans.

Meetings: Third Friday of each month at the RSM

Website: www.legacy.com.au/inverell



Volunteer Rescue Association

PO Box 660, Inverell 2360

President: Brian Tome

Ph: 6721 0157

Ph: 0427 293 333

A strong presence in Inverell for many emergency situations such as storms and floods.

Email: vra.inverell@bigpond.com

Ashford Show Society

PO Box 20, Ashford 2361

Secretary: Lisa Heyer
Ph: (07) 4653 8183

This group plans and runs the Ashford Show and all its events.

Country Women's Association Inverell

PO Box 363
CWA Cottage, 17 River Street, Inverell 2360

Meetings: Second Friday of each month 1.30pm at the CWA Cottage

CWA of NSW Inverell Branch allows women to get together to socialise and discuss issues of relevance to them and their lifestyles. Supporting women, children and families in rural areas through health and welfare. New members welcome.

Inverell East Probus Club Inc.

PO Box 100, Inverell 2360

President: Arthur Macalpine
Ph: 6721 0275

Secretary: Graham Warne
Ph: 6722 4760

Visitors welcome, especially any tourist in the area from other Probus Clubs.

Meetings: Second Monday of each month 10am at the Inverell East Bowling Club

Inverell Probus Club

PO Box 585, Inverell 2360

President: Bob Moore
Ph: 6721 1777

Secretary: Merv Hickson
Ph: 6721 5293

The Club welcomes professionals and business people to its meetings to allow them to mix with other like minded people socially and develop working contacts. Visitors from other Probus clubs are also welcome. Meetings: First Tuesday of each month 10am at Flanders House

The Inverell Chamber of Commerce

PO Box 377, Inverell 2360

Ph: 6721 1817
Ph: 0427221955



RECREATION & FACILITIES

BOATING & FISHING

Copeton Northern Foreshores

Contact: Inverell Shire Council

Ph: 6728 8161

With primitive camping facilities available including powered and unpowered sites and amenities block. The reserve has a resident caretaker / ranger and a small kiosk which stocks ice, gas, drinks, bait and other basic provisions.

Copeton Waters

Copeton Dam Rd, Inverell 2360

Ph: 6723 6269

There are plenty of accommodation choices from cabins to rustic campsites. Water-skiing, wakeboarding, sailing, canoeing or just kicking back with a fishing rod are just a few of the fabulous activities to enjoy on this the beautiful lake. Take a picnic or dine at the Northcott Kiosk. Watch the kids romp in the colourful waterpark or on the jumping pillow.

COMMUNITY HALLS & CENTRES

Bonshaw Memorial Hall

Campbell St, Bonshaw 2361

Contact: Michelle Ramsay

Ph: (07) 4653 5163

President: Kevin Leach

Ph: 0459 583 633

The Hall Committee host various fund raising events on an annual basis, as well as hiring out the venue for other functions and meetings. Tennis Courts are also available to the public for use.

Delungra CWA Hall

Burnett St, Delungra 2403

Contact: Mary Shephard

Ph: 6725 2433

Ph: 0488 048 284

Email: gwydircwa@gmail.com

Delungra Hall

Pearsby Hall Rd, Delungra 2403

Contact: Glenis Charter

Ph: 6724 8257

Public Hall in Delungra, available for hire.

Elsmore Memorial Hall

Inverell Road, Elsmore 2360

Postal: P.O. Box 645

Inverell 2360

Contact: Edna McLane

Ph: 6723 2345

A community hall available for hire – functions, birthday parties, meetings etc. Modern kitchen and amenities. Toy Library is available on request.

Gilgai Public Hall and Recreation Reserve Trust

PO Box 45, Gilgai 2360

Chairperson: Han Ebbeling
Ph: 6723 1490

A community hall available for hire. Oval for school sports and various outdoor events.

Graman War Memorial Hall

Cnr Centenary Drive and Graman Road, Graman
Postal Address: "Willowei" Graman Ashford Rd,
Graman 2360

Contact: Rachel Gower
Ph: 0408 089 352

Graman War Memorial Hall is a community hall. It is available for hire for functions such as birthdays, weddings, family reunions etc. All bookings are at the discretion of the Graman War Memorial Hall Committee. A bond is required at the time of booking.

Gum Flat Public Hall

Copeton Dam Road, Gum Flat 2360

President: Wayne Mudford
Ph: 6723 2888

Contact: Penny Hackney
Ph: 0427 949 953

Public Hall in Gum Flat, available for hire.

Inverell Girl Guides Hall

Campbell St, Inverell
P.O. Box 635, Inverell 2360

Contact: Beth Hamilton
Ph: 0428 224 118

Long Plain Hall

5 Long Plain Ln, Inverell 2360

Contact: Suzanne Baker
Ph: 0444 532 536

Masonic Hall

PO Box 157
Otho Street, Inverell 2360

Contact: Wayne Jones
Ph: 6721 0573
Ph: 6722 1821
Ph: 0418 656 648

Community hall, available for hire.

Mount Russell Hall

Mount Russell 2360

Contact: Katrina Finney
Ph: 6724 8490
Mob: 0402 910 572

Public Hall in Mount Russell, available for hire.

Nullamanna Hall and Sports Arena

Ph: 6725 1442

A large multi purpose facility suitable for functions in the Main Hall or smaller group activities, meetings in the adjacent shed and sports grounds. A fully equipped kitchen with a hot water urn, refrigerator, stove and microwave is situated in the Main Hall plus a servery with BBQ & bar facilities in the adjacent shed. Hall available for hire.



Positive Body Studio

126 Otho Street, Inverell 2360

Ph: Zoe – 0432 215 323

Room available for hire opposite the Post Office for training days/weekends, large meetings, fundraisers etc. If you're looking for a space to hire for your next event, please come and have a look and let's discuss the possibilities of me helping you run a successful event. We have Bowen weekend workshops, craft day fundraisers, motivational speakers, small market days, plan parties and Christmas parties.

Shop front with parking, ramp access, large room, 17 chairs, 3 long tables, toilet and tea/coffee facilities.

Call or Text Zoe for hire rates and availability.

Scottish Hall

Ring Street, Inverell 2360

Contact: Warren Purvis
Ph: 0423 188 762

Town Hall Inverell

PO Box 138
144 Otho Street, Inverell 2360

Contact: Inverell Shire Council
Ph: 6728 8288

The Inverell Town Hall is Inverell's Premier Cultural and Performance Theatre/Venue. It is available for hire, subject to Council's approval. In 2014, extensive renovations were completed; the Inverell Town Hall now boasts:

- Reverse cycle air conditioning
- A commercial kitchen
- An extended stage
- New sound and lighting system
- Revamped amenities and dressing rooms
- New seating



Inverell Shire Public Library

55-59 Campbell Street, Inverell 2360

Ph: 6728 8130

Fax: 6728 8133

Providing a vast array of services for all ages including;

- Children's Activities – Baby Bounce, Story Time
- Teenagers Activities – High School Book Club
- All Ages Activities – Knitting Club, Free Movie Screenings, Computer/Technology Lessons

All these activities and more take place in a fresh, vibrant and comfortable setting with a coffee machine for your convenience.

Alongside these services the Inverell Shire Library has a plethora of Books, Magazines, DVD's and CD's available for you to borrow, along with an extensive online library of e-books.



PARKS, RESERVES AND SPORTS GROUNDS

PARKS

Bellevue Park

Across the road from Wade Street Shop, Inverell 2360

Contact: Inverell Shire Council

Ph: 6728 8288

Bellevue Parks newly installed playground offers a wide range of play options including flying fox, xylophone, monkey bars, climbing blocks and educational games such as a braille alphabet.

The play equipment has shade sails, a rubber soft-fall base, seating and is also fully fenced.

Along with the equipment, Bellevue Park has new picnic tables and ample shade.

Campbell Park

Captain Cook Drive, Inverell 2360

Contact: Inverell Shire Council

Ph: 6728 8288

Campbell Park's facilities include picnic tables, amenities, new playgrounds including monkey bars, a climbing wall, slide and swing plus a large array of exercise equipment and a sealed walking track.

Campbell Park features a Rotunda that is available for hire.

Please contact Inverell Shire Council for booking enquiries.

Lions Park

Old Bundarra Road, Inverell

Contact: Inverell Shire Council

Ph: 6728 8288

Lions Parks facilities include free BBQ, amenities, picnic tables under cover & play equipment.

Off Leash Dog Park

Behind Campbell Street and Glen Innes Road along the River Bank.

Contact: Inverell Shire Council

Ph: 6728 8288

An area along the river that sees dogs and their owners to enjoy the river bank and lush grass area while allowing dogs to be off their leash.

Sinclair Park

Glen Innes Road, Inverell 2360

Contact: Inverell Shire Council

Ph: 6728 8288

Sinclair Park's facilities include amenities, a BBQ and covered picnic tables along with a Bicentennial Memorial and Scottish Memorial Cairn.

Victoria Park

Cnr Vivian and Evans Street, Inverell 2360

Contact: Inverell Shire Council
Ph: 6728 8288

Victoria Park hosts covered picnic tables, new amenities and a newly installed all inclusive playground featuring climbing activities, a swing, educational games, a carousel and a liberty swing. Liberty Swing keys are to be collected from the Inverell Shire Council Admin Centre.

RESERVES

Lake Inverell

Lake Inverell Drive, Inverell 2360

Contact: Inverell Shire Council
Ph: 6728 8288

Lake Inverell Reserve features shelters, picnic tables, free BBQ's, amenities, children's play equipment and marked walking tracks with informational signage regarding flora and fauna. Lake Inverell provides a scenic location with wildlife, the lake and flora.

SPORTS GROUNDS

Brooks Oval

Cnr Henderson and Lawrence Street, Inverell 2360

Contact: Inverell Shire Council
Ph: 6728 8288

Brooks Ovals facilities include a cricket pitch, shelter and amenities. Please contact Inverell Shire Council for booking enquiries.

Cameron Park

Cnr Cameron and Medora Street, Inverell 2360

Contact: Inverell Shire Council
Ph: 6728 8288

Cameron Park has recently been upgraded and now has facilities including a cricket pitch, practice nets, amenities and new fully fenced children's play equipment. Please contact Inverell Shire Council for booking enquiries.

Sporting Complex

Eucalypt Drive, Inverell 2360

Contact: Inverell Shire Council
Ph: 6728 8288

The Sporting Complex facilities include hockey, touch, football and soccer fields. Sealed netball courts, 3 amenities blocks, change rooms and showers, 3 canteens, lights for night-time sport and a PA system. Please contact Inverell Shire Council for booking enquiries.

Varley Oval

Cnr Lawrence and Evans Street, Inverell 2360

Contact: Inverell Shire Council
Ph: 6728 8288

Varley Oval is a fully fenced, newly upgraded sporting oval. It hosts facilities including a turf wicket and sight screens, electronic scoreboard, practice nets, athletics track (upon request) and long jump pit (upon request). As well as these sporting facilities Varley Oval has amenities, change rooms/showers, clubhouse/function room, spectator seating, lights for night-time sport and a PA system. Please contact Inverell Shire Council for booking enquiries.

SPORTING BODIES

ARCHERY

Hunting Archers of Inverell

15233 Guyra Rd, Gilgai 2036

Secretary - Allan Turvey
Ph: 6723 1204

Held: Second and Fourth Sunday of each month

Contact Allan for times and more information.



Sapphire City Archers

PO Box 784
Inverell Show Ground, Tingha Road, Inverell 2360

President: Tim Hackney
Ph: 0457 246 099

Secretary: Mark Luxford
Ph: 0421 216 216

A Field Archery Club allowing most archery equipment to be used on our ranges. The Club is affiliated with the Australian Bow Hunting Association. Club equipment is available to persons wishing to become involved in archery.

Indoor and Outdoor archery shoots are conducted by the Club, phone president Tim Hackney for more information including outdoor shoot times and dates.

Indoor Shoots Held: Tuesdays and Fridays 6pm

ATHLETICS

Little Athletics

PO Box 1109, Inverell 2360

Website:
www.sites.google.com/site/inverelllittleathleticscentre
Email: invlac@hotmail.com

A club for boys and girls aged 4-17 who have an interest in and enjoy Athletics as a sport. Held: Thursday afternoons in summer from 4:30-6pm commencing in October at Varley Oval



BASKETBALL

Inverell Basketball Association

PO Box 201, Inverell 2360

President: Tane Richards
Ph: 0438 522 753
Ph: 0428 025 420

For more information, please contact the president Tane Richards. Community members are welcome to attend.



Meetings: Second Wednesday of each month

BOWLING CLUBS

Ashford Bowling Club

PO Box 48
34 Duff Street, Ashford 2361



Ph: 6725 4202
Fax: 6725 4441

Inverell East Bowling Club

PO Box 464
Glen Innes Road, Inverell 2360



Ph: 6722 1545
Fax: 6721 0257

Inverell RSM Bowling Club

PO Box 258
Oliver Street, Inverell 2360

Please contact the Inverell RSM or relative contacts for information
Website: www.inverellrsm.com.au

Ph: 6722 3066
Fax: 6722 5480

Women's: Wednesdays
Men's: Thursdays (twilight) and Saturday
Indoor: Wednesday 7pm

Inverell Women's Bowling Club

PO Box 118, Inverell 2360

Ph: 6722 1545

Playing and promoting the game of bowls. We welcome juniors, support the Cancer Council, Relay for Life and the Inverell Hospital Operations Room. We support those charities that use our club such as Child Flight and Westpac Helicopter Service.

BUSHWALKING

Inverell Bushwalking Club

PO Box 560, Inverell 2360

Secretary: Annie Whitaker
Ph: 0422 664 171

Contact: Paul Thwaites
Ph: 6722 3090

Contact: Bruce Turner
Ph: 6722 3267

Email: inverellbushwalkingclub@gmail.com

Website: www.inverellbushwalkers.wordpress.com

The Bushwalking Club aims to promote interest in bushwalking, bird watching, canoeing, photography and other related outdoor activities. Meetings: Second Wednesday in March, May, July, September and November, 7.30 pm in the Inverell High School Common Room

CRICKET

Inverell Cricket Association Inc.

PO Box 1192, Inverell 2360

Contact: Eric Higgins
Ph: 6725 1567

Inverell Junior Cricket Association

97 Brae St, Inverell 2360

Contact: Simon Smith
Ph: 6722 3511

Inverell Insports Arena

60 Ring Street, Inverell 2360

Ph: 6722 4866
Fax: 6721 0979

Cricket, Volleyball, Soccer and Netball in a fun and friendly, fully equipped indoor setting. Competitions and school sports also available.



Inverell RSM Cricket Club

PO Box 258, Inverell

Ph: 6722 3066
Fax: 6722 5480

President: Doug Kent
Ph: 6722 4732

CYCLING

Inverell Cycle and Tri Club

President: Andrew Blake
Ph: 0427 732 473



Website: www.inverellcyclentri.org.au

Inverell Cycle Club

President: Mick Hoynes
Ph: 0427 150790



Inverell Mountain Bike Club

President: Peter Horwood
Ph: 0412 547 078

Inverell Mountain Bike park is located approx. 5m from Inverell on the Bundarra Road (just after the Golf Club). The track features a 5km, 3km and 1km loop.

DANCE

Craze Dance Academy

Shop 5, Country Fair Building, Sweeney Street,
Inverell 2360



Contact: Laura King
Ph: 6721 2339

Email: laura@crazedanceacademy.com.au
Website: www.crazedanceacademy.com.au

FISHING

Inverell Anglers Association

PO Box 901, Inverell 2360

President: Bob Johnston
Ph: 6722 2535

Secretary: Warren Anderson
Ph: 6721 2851

This association stocks rainbow and brown trout into this district's notified trout streams, on behalf of NSW fisheries, to enhance recreational fishing in the region.

Inverell RSM Fishing Club

PO Box 258, Inverell 2360

Contact: Peter Black
Ph: 0458 251 582

Website: www.inverellrsm.com.au

Email: rsmfishingclub@gmail.com

GOLF

Ashford Golf Club

Limestone Road, Ashford 2361

Ph: 6725 4284

The Ashford Golf Club is unique in that it is one of the few 18 hole sand green courses in NSW, it is open to the public at all times. It provides an ideal venue for fundraising and social activities.

Inverell Golf Club

PO Box 247, Inverell 2360

Clubhouse
Ph: 6722 1574

Golf Shop
Ph: 6722 4203

- Social golf and new memberships welcome
- Golf tuition
- Golf apparel
- Equipment sales and advice



Inverell RSM Golf Club

PO Box 258, Inverell

Ph: 6722 3066
Fax: 6722 5480

Website: inverellrsm.com.au

GYMNASICS

Boy's Club Inverell

PO Box 182
47 Vivian Street, Inverell 2360

Ph: 6721 0986

Email: boysclubinverell@bigpond.com

Open: Monday to Friday from 4.00pm

Boys Club Inverell provides gymnastic classes for all ages and skill levels, including;

- Kindergym, boys and girls recreational level
- Levels program - competitions
- Children with special needs classes

Also available Karate and Boxing. Everyone is welcome.



HEALTH AND FITNESS CENTRES

Anytime Fitness Inverell

2/23 Lawrence Street, Inverell 2360

Ph: 6721 4315

Website: www.anytimefitness.com.au

Fully equipped 24 hour gym. Personal training sessions available.



Ministry of Personal Training

131 Otho Street, Inverell

Ph: 0477 432 689



Nick Kings Lifestyle Centre

Cnr Lawrence and Evans Streets, Inverell 2360

Ph: 6721 1112

Ph: 0421 088 006

Inverell Self Defence and Martial Art Centre.

Taekwondo, Kids classes, Tia-Chi and Stretching, Boxing, Thai Boxercise, Cardio-Yoga, Judo Self Defence, Women's Self Defence, Veterans Taekwondo, Koshki Karate Training, Boxa-fit.



Proactive Health and Fitness Centre

146-150 Sweeney Street, Inverell 2360

Ph: 6722 5225

Email: proactivehealth7@yahoo.com.au

Gym, Classes and Personal Training. Website: www.proactivegym.com.au



HOCKEY

Inverell Hockey Association

PO Box 609, Inverell 2360

President: Kerry Stafford

Ph: 0427 465 055

Winter competition held from April to October. Mixed summer competition held from October to March.

MARTIAL ARTS

Nick Kings Lifestyle Centre

Cnr Lawrence and Evans Streets, Inverell 2360

Ph: 6721 1112

Ph: 0421 088 006

Inverell Self Defence and Martial Art Centre.

Taekwondo, Kids classes, Tia-Chi and Stretching, Boxing, Thai Boxercise, Cardio-Yoga, Judo Self Defence, Women's Self Defence, Veterans Taekwondo, Koshki Karate Training, Boxa-fit.



NETBALL

Inverell Netball Association

PO Box 179, Inverell 2360

Contact: Annette Murray

Ph: 0428 211 916



Inverell Insports Arena

60 Ring Street, Inverell 2360

Ph: 6722 4866

Fax: 6721 0979

Cricket, Volleyball, Soccer and Netball in a fun and friendly, fully equipped indoor setting. Competitions and school sports also available.



RACING CLUBS

Inverell Jockey Club

PO Box 111, Inverell 2360

Ph: 6722 1139

Thoroughbred racing club. Races are held in August, October and November, also on Boxing Day and the Inverell Cup Day on New Year's Day



Inverell Harness Club

PO Box 159, Inverell 2360

Secretary: John Watts

Ph: 6722 2922

Meetings: First Sunday of each month 10am at the Showground

RSM CLUBS

RSM Civilian Rifle Club

Secretary: Robert Adamson
Ph: 6722 2297

Email: robertadamson5@bigpond.com

RSM Clay Target Club

PO Box 1229, Inverell 2360

Contact: Matt Colley
Ph: 6722 3940

Club shoots at the Range on Glen Innes Rd.
The Club Layouts: 4 DTL Layouts, 1 Sporting Layout, 1 Tower Layout and 1 Ball Trap Layout.

RSM Darts Club

PO Box 258, Inverell 2360

Ph: 6722 3066

RSM Pistol Club

PO Box 258, Inverell 2360

Ph: 6722 306

RSM Small Bore Rifle Club

PO Box 2587, Inverell 2360

President: Phil Harris
Ph: 0427 790 578

.22 calibre target shooting and bench rest shooting over 50 metres.
Shooting conducted Wednesdays & Sundays from 8.30am at the Glen Innes Rd Range.

Secretary: John McGufficke
Ph: 6723 2262

RUGBY LEAGUE/ AFL/ UNION/ TOUCH FOOTBALL

Ashford Roosters Football Club

Contact: Mick Lewis
Ph: 6725 4017

Inverell Hawks Rugby League Club

PO Box 601, Inverell 2360

Contact: Sue Fox
Ph: 0488 222 449

Inverell Highlanders Rugby Club

PO Box 570, Inverell 2360

President: Roly King

The Inverell Highlanders are a local sport club supporting community and fundraising events.

The club caters for ages from under 6 years to the “Golden Oldies”. Home games are played at the Inverell Rugby Club on Ross Street and all are welcome to attend and experience the game.

Inverell Junior Rugby Club

PO Box 570, Inverell

Contact: Louise Wilson
Ph: 0415 516 802

Inverell Junior Touch Association

Contact: Emma Mozzell
Ph: 0429 544 953

Inverell Saints Football Club

Contact: Jason Gobbert
Ph: 0428 853 212

Inverell Touch Association

PO Box 622, Inverell 2360

Contact: Tony Baxter
Ph: 6722 2187

SOCCER

Inverell & District Soccer Association

PO Box 677, Inverell 2360

Contact: John Rosberg
Ph: 0408 667 638



Inverell Insports Arena

60 Ring St, Inverell 2360

Ph: 6722 4866

Cricket, Volleyball, Soccer and Netball in a fun and friendly, fully equipped indoor setting. Competitions and school sports also available.



Joeys FC United Inc.

PO Box 623, Inverell 2360

Contact: Henirich Haussler
Ph: 6721 0355

SWIMMING

Inverell Swimming Club

PO Box 337, Inverell 2360

Email: inverellswimmingclub@yahoo.com.au



Ashford Swimming Pool

29 Bala Street, Ashford 2361

Ph: 6725 4045

Open from October to March
7 Days a Week – 12pm – 6pm

- 25 meter long pool, 12 meters wide
- Toddler pool – Full shade cover
- BBQ facilities
- Immaculate lawns
- Volley ball court
- Ample shade and seating
- Basic canteen facilities

Inverell Heated Swimming Pool

Cnr Evans and Lawrence Streets, Inverell 2360

Ph: 6722 3939

Summer Opening Hours:

Monday – Friday - 5.30am-7.30am, 11am-1pm,
3pm-6pm

Saturday – Sunday - 11am-3pm

Winter Opening Hours:

Monday – Thursday - 11am-1pm, 3pm-7pm

Friday - 11am-1pm, 3pm-6pm

Saturday – Sunday - 11am-1pm

- 25 metre heated pool
- 25 metre outdoor pool (not heated)
- Slippery Slide
- Inflatable Aqua Challenge
- Children’s Pool with fountains
- Canteen
- Public Amenities
- Showers and Change rooms
- Seating
- BBQ Facilities

Sensational Seniors

Cnr Evans and Lawrence Streets, Inverell 2360

Contact: Lorraine Bell

Ph: 6721 0750

Monday: 11am-12pm

Thursday: 11.30am-12.30pm

Holding maternity and seniors water aerobic classes.
Auto mobility classes for those who wish to improve their body.

TENNIS

Inverell Tennis Club

PO Box 384, Inverell 2360

Website: www.inverelltennisclub.org.au

The complex has 21 tennis courts, including 6 of synthetic grass, with 8 courts under lights. This is a great facility that has a gas BBQ area and covered seating.

Staggy Creek Tennis Club

President: Pam Mason

Ph: 6723 2912

Three courts are available for anyone who enjoys social tennis. Visitors always welcome.

Secretary: Margaret Eddy

Ph: 6722 2041

VOLLEYBALL

Inverell Insports Arena

60 Ring St, Inverell 2360

Ph: 6722 4866

Cricket, Volleyball, Soccer and Netball in a fun and friendly, fully equipped indoor setting. Competitions and school sports also available.

