

DEVELOPMENT SERVICES BULLETIN

Draft Inverell Local Environmental Plan 2012

At its meeting on 21 August 2012, Council endorsed the Draft Inverell Local Environmental Plan (LEP) 2012, subject to a number of minor amendments.

The Draft LEP will replace the Inverell Local Environmental Plan 1988 and has been eight years in the making, since Council completed a Local Environmental Study in 2004.

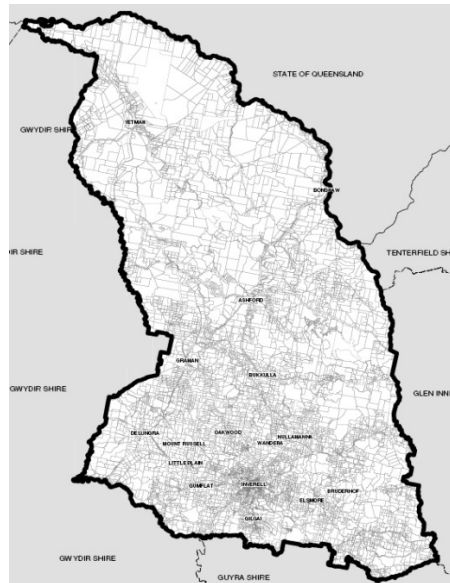
Community Involvement

A total of 35 submissions were received in response to the exhibition of the Draft LEP. The submission makers ranged from State agencies to local residents. After considering the submissions, several minor amendments to the Draft LEP were endorsed.

In addition to the submissions, Council planning staff handled over 250 direct enquiries from interested community members.

Where to From Here?

It is expected that the Draft LEP will be gazetted at the end of year.



Development Services Contact Details:

Manager Development Services
Anthony Alliston
0425271633

Planning Officers:

Chris Faley
Development Planner
02 6728 8251

Elise Lockwood
Trainee Town Planner
02 6728 8239

Building Surveyors:

Mick Fox
Senior Building Surveyor
02 6728 8242

Howard Marsden
Assistant Building Surveyor
02 6728 8241

Jade McIlwain
Trainee Building Surveyor
02 6728 8285

New Development Control Plan

In addition to the Draft LEP, Council is in the process of preparing a new Development Control Plan which will apply to the entire Shire.

What is a Development Control Plan?

A Development Control Plan (DCP) is a planning document that contains local controls that apply to a development. Council currently has 17 DCPs which address a range of matters including but not limited to, unit development, subdivision, flooding, car parking and heritage conservation.

What is the form of the New DCP?

Rather than having 17 DCPs, Council will have one DCP which will apply across the Shire. Many of the existing DCPs will be included as Chapters within the new DCP.

Council will also take the opportunity to review the existing DCPs and make changes where necessary, including the removal of redundant DCP's and modification of existing DCP controls.

It is possible that the new DCP will also contain chapters with controls that previously did not exist.

How can you get involved?

Council will be placing the new DCP on exhibition in the coming months for public consideration.

In the meantime, if you are aware of any issues with Council's current DCPs you are encouraged to contact Council's Planning Staff for discussion.

Further Information

If you require any further information on either the Draft Inverell Local Environmental Plan or Council's progress towards a new Development Control Plan, please do not hesitate to contact Council's Planning Team.