



# INVERELL SHIRE COUNCIL DEVELOPMENT SERVICES BULLETIN

June 2016

## INVERELL SHIRE COUNCIL PUBLIC MAPS

### NEW INTERACTIVE MAPPING PROGRAM AVAILABLE ON OUR WEBSITE

Inverell Shire Council has recently launched a new and improved Online Mapping Tool on our website.

It provides users with access to property information layers such as waste collection, zoning, property details, bushfire prone, flood liable land and other planning information. Some recently added layers which may be of interest include:

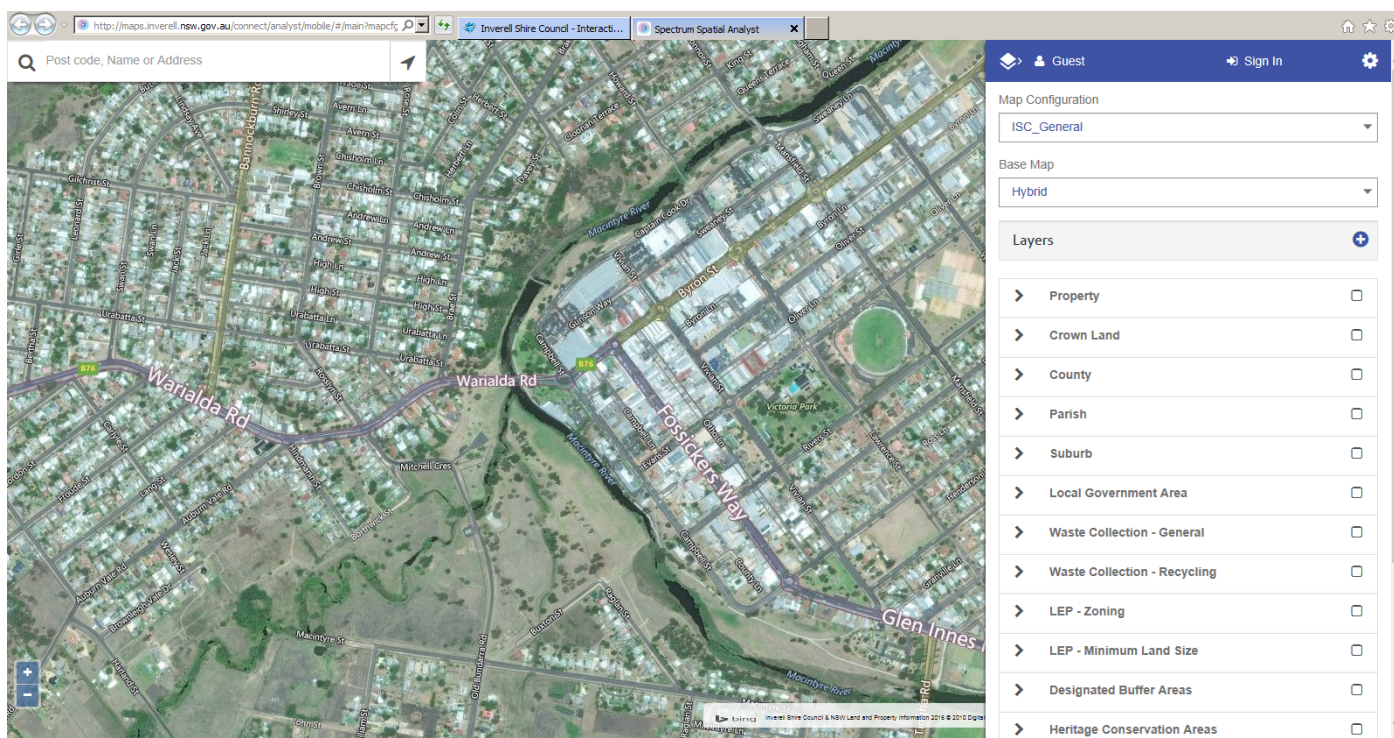
- Heritage Items
- Heritage Areas
- Sewer Mains
- Water Mains

Once you have used the mapping tool Council welcomes any feedback on your user experience as it will assist Council to continue to develop and improve its functionality. Your feedback will also assist Council to tailor the information to be more useful to the community.

Should you have any content suggestions, queries on the use of the program, or to confirm information accuracy Council's GIS department can be contacted on (02) 6728 8288 during business hours.

A user manual is available for your assistance, as well as a Help option from within the program.

The Online Mapping Tool can be found at <http://www.inverell.nsw.gov.au/maps.html>



Administration Centre, 144 Otho Street (PO Box 138), Inverell NSW 2360

Ph: 02 67 288 288 | Fax: 02 67 288 277 | [www.inverell.nsw.gov.au](http://www.inverell.nsw.gov.au)