

WHITE ROCK
Wind Farm

WHITE ROCK
Solar Farm



GOLDWIND **WHITE ROCK** Solar Farm

Turning the first sod at the White Rock Solar Farm project site. From the left: Acting Mayor of Inverell Shire Council - Cr Anthony Michael, Vice President Investment of Goldwind Australia - Mr Ning Chen, Deputy Prime Minister and Member for New England - Mr Barnaby Joyce, Managing Director of Goldwind Australia - Mr John Titchen, Mayor of Glen Innes Severn Council - Cr Steve Toms.

Welcome to the second combined White Rock Wind Farm and White Rock Solar Farm newsletter. This newsletter provides information and updates about both projects. Newsletters will continue to be distributed regularly as the projects progress and milestones are achieved.

The 175 megawatt (MW) White Rock Wind Farm is in the New England Tablelands approximately 20 km west of Glen Innes and 40 km east of Inverell. Stage 1 will consist of 70 wind turbines along with the related civil and electrical infrastructure. The project is expected to be fully operational by late-2017.

The 20 MW AC White Rock Solar Farm will be located adjacent to the northern end of the White Rock Wind Farm, approximately 18 km from Glen Innes.

What's happening?

White Rock Wind Farm switches on turbines

The first turbines at White Rock Wind Farm have now been connected to TransGrid's network and are producing electricity.

NSW transmission network operator and manager TransGrid, along with sub-contractor Zinfra, designed, constructed and commissioned White Rock Wind Farm's 33/132 kV substation and transmission line to connect the project to the NSW transmission network and the National Electricity Market.

White Rock Solar Farm Ground-Breaking Ceremony

On Monday 10 July, a Ground-Breaking Ceremony was held on the solar farm project site to celebrate the start of construction.

Deputy Prime Minister the Hon. Barnaby Joyce MP, Member for New England, joined John Titchen, Managing Director of Goldwind Australia, local Mayor of Glen Innes Severn Council and the Acting Mayor of Inverell Council to mark the commencement of construction of the \$41.4 million project.



White Rock Solar Farm Construction Commences

Deputy Prime Minister the Hon. Barnaby Joyce MP, with Dan Ford, Owner's Representative for the Solar Farm project

UGL, the main engineering, procurement and construction contractor for the solar farm has now mobilised to the project site. Initial work to be undertaken by UGL and its subcontractors will focus on establishment of a temporary construction office facility and access track works.

Dan Ford, Owner's Representative for the project said construction of the solar farm will be ongoing until the end of the year, with the completion of the project aimed for early 2018.

'The construction period for the project is fairly short in comparison to the wind farm, however the site will be busy with up to 75 people expected to be on site at construction peaks.'

Dan said the project is particularly interesting to be a part of as it is one of only two wind-solar hybrid projects in Australia. Goldwind Australia (along with Beijing Jingneng Clean Energy) also own Australia's first wind-solar hybrid project, located in the Southern Tablelands of NSW and now in advanced stage of construction.



Approximately 40 representatives from local businesses in attendance at the event.

White Rock Solar Farm Local Business Participation Program

White Rock Solar Farm recently launched the Local Business Participation Program to maximise opportunities for local suppliers to participate in the project. Like the program undertaken for the wind farm, the solar farm has adopted a three-stage process to maximise local participation and local economic benefits. Under the first stage of the Program, White Rock Solar Farm was listed on the ICN Gateway and businesses could register an expression of interest for any of the 15 different work packages ranging from fencing to civil construction of on-site roads.

The second stage of the Program was an Industry Briefing held in Glen Innes on Thursday 15 June 2017 (see photo). The Industry Briefing provided local businesses with additional information about the available work packages and the process of bidding for subcontracting or supply opportunities. Over 40 businesses were in attendance at the event, as well as representatives from White Rock Solar Farm, UGL – the main Engineering, Procurement Construction contractor, and a representative from the ICN Gateway.

The program is now in stage three, which spans the phases of project design and construction and the transition into the operations. In this stage, the main contractor may engage suppliers and subcontractors according to their normal procurement processes which may include tendering for work. Prior to engagement, businesses will be required to complete pre-qualification requirements according to the requirements of the main contractor.

White Rock Wind Farm Construction Update

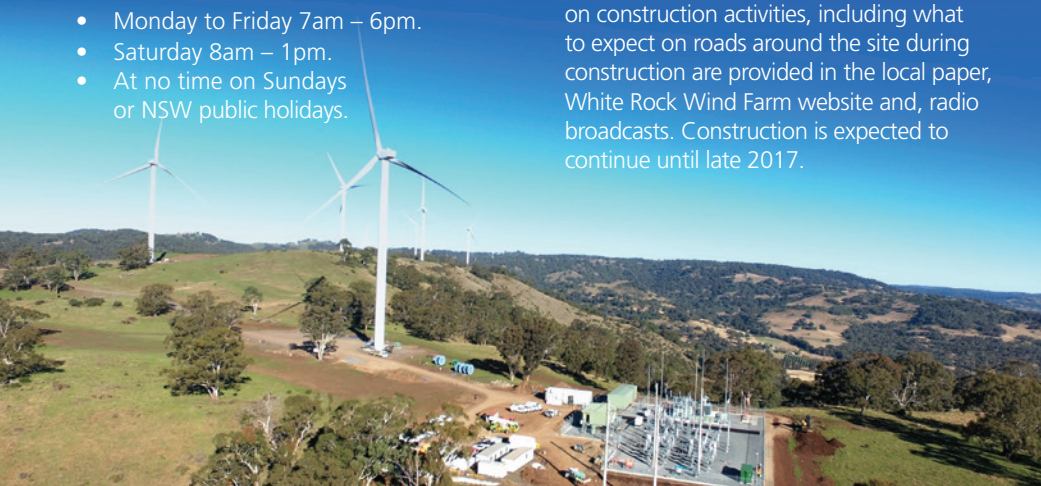
TransGrid and Zinfra have constructed and delivered the wind farm's connection infrastructure, including the 33/132 kV substation and the associated 8 km of transmission line (see photo of completed substation). Fifty-three turbines have been fully erected and work on site is now focussed on installation and erection of the remaining seventeen wind turbines and associated commissioning work.

Construction work on site generally takes place during standard construction hours:

- Monday to Friday 7am – 6pm.
- Saturday 8am – 1pm.
- At no time on Sundays or NSW public holidays.

Some out of hours work may be undertaken to complete time-sensitive works such as turbine installation. For this to occur, White Rock Wind Farm is required to adhere to the out of hours work protocol for the assessment and approval of works outside of the approved hours for construction, as outlined in the planning approval.

White Rock Wind Farm project team aims to minimise disruption to the local community and apologises if construction activities cause you some inconvenience. Regular updates on construction activities, including what to expect on roads around the site during construction are provided in the local paper, White Rock Wind Farm website and, radio broadcasts. Construction is expected to continue until late 2017.



Transportation of wind turbine components



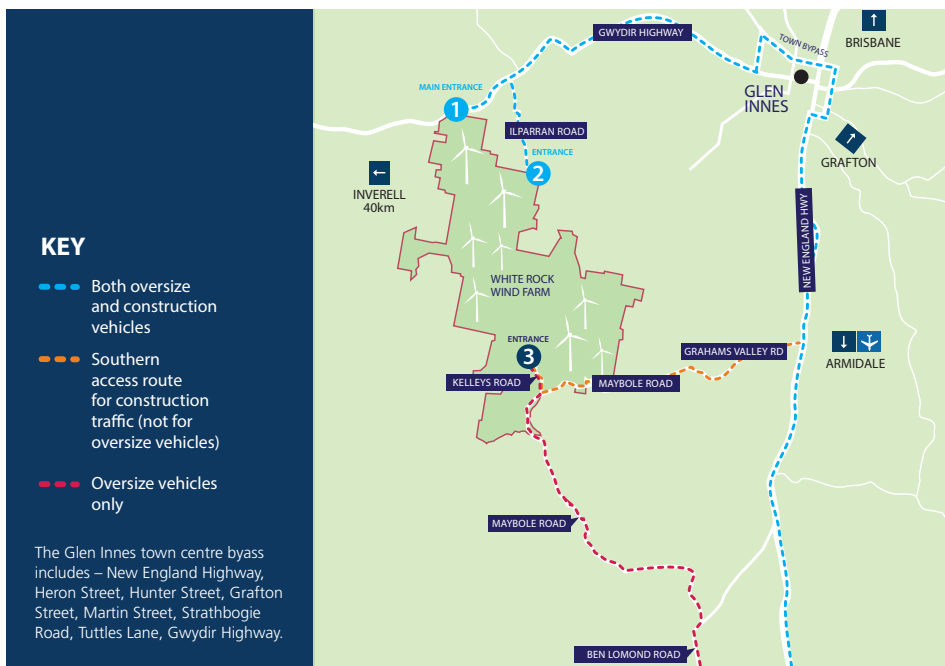
Wind turbine blades, destined for White Rock Wind Farm.

Transportation of wind turbine components from the Port of Newcastle to the project site is aimed for completion in September 2017. Currently two to three turbines are being delivered to the project site each week, this equates to approximately five over-size loads being transported every day.

A further route option for over-dimensional vehicles for access to the southern parts of the project site is now being used. The route is approximately 32 km from the New England Highway to Kelleys Road, Maybole. The route exits the New England Highway to the north of Llangothlin and continues approximately 13 km on Ben Lomond Road then on Maybole Road for a further 19 km before turning into Kelleys Road.

If you're interested in finding out more information on the timing of deliveries, please check the indicative schedule that is regularly updated on the project website or drop into the local shop front.

If you do encounter any over-size loads, please take care and observe all warning and speed restriction signs, including directions from escort vehicles and police. If you have any questions or concerns related to the transportation of turbine components please contact us using a communication channel listed at the end of this newsletter.



White Rock Wind Farm Stage 2

Stage two of White Rock Wind Farm is currently being planned, with a modification application to be submitted shortly to the NSW Department of Planning and Environment. The modification will seek consent for additional wind turbine locations and amendments to existing locations. It will also seek an increase in turbine height to allow the optimal turbines for the project site and installation of Goldwind's latest advanced technology. Construction of stage two is aimed to commence in mid-2018.



PICTURED LEFT: Sandra Royal, Local Representative, presenting the shipping containers to representatives from the NSW RFS.

White Rock Wind Farm donates shipping containers to NSW Rural Fire Service

White Rock Wind Farm has donated 45 shipping containers to the NSW Rural Fire Service (RFS). The NSW RFS will use the containers for fire training and service provision across the district.

‘The NSW RFS volunteers generously give their time to not only fight fires, but to help prepare the community before and during bush fire season. We are very proud to assist them to deliver their invaluable services to

the community’ said Sandra Royal, Local Representative for White Rock Wind Farm.

Superintendent Chris Wallbridge said the NSW RFS is very grateful for the donation, with the containers to have a number of different uses including hot fire training centres, aviation support and storage.

The Northern Tablelands RFS is coordinating the transfer of the containers from White Rock Wind Farm right across Region North, into the Hunter Valley and Sydney.

Sandra thanked all community members that have expressed interest in receiving shipping containers and advised that no further containers are available.

White Rock Wind Farm Community Consultative Committee

The aim of the Community Consultative Committee is to provide a forum for open discussion between representatives of White Rock Wind Farm, the community, local councils and other stakeholders, and to keep the community informed of progress.

The WRWF CCC is also used as an opportunity to provide an update on the progress of the White Rock Solar Farm and also stage two of the White Rock Wind Farm project.

Meeting minutes and associated meeting materials are available on the project website and at the public libraries in Glen Innes and Inverell.

The WRWF CCC consists of the following members:

- Jane Newsome, Independent Chairperson
- Anthony Alliston, Inverell Shire Council Representative
- Steve Toms, Glen Innes Severn Council Representative

- Adam Anderson, Community Representative (Host Landowner)
- Robert Dulhunty, Community Representative (Host Landowner)
- Joanne Wright, Community Representative
- Jim Ritchie, Community Representative
- Neil Eigeland, Community Representative
- Adrian Maddocks, White Rock Wind Farm Representative
- Sandra Royal, White Rock Wind Farm Representative

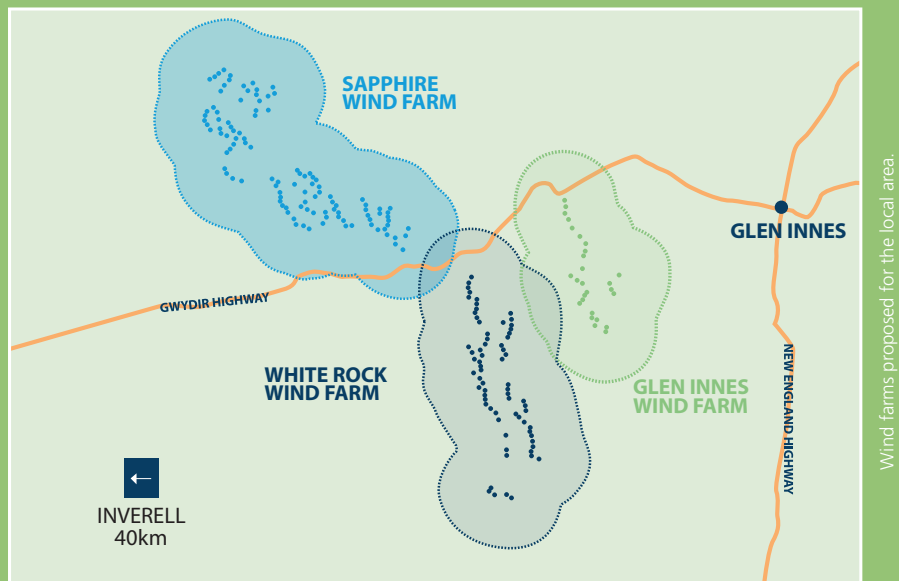
**The next meeting is scheduled for:
Thursday 9 November 2017
from 1:30-3:30pm at the
Glen Innes Severn Learning Centre
(71 Grey Street, Glen Innes).**

For the most up to date information regarding the CCC please see the project website: whiterockwindfarm.com

Any person may attend the meeting as an observer. To RSVP to attend a meeting as an observer or for further details on the committee please contact us.

Neighbouring Wind Farms

The abundance of natural resources in the New England Tablelands means that White Rock Wind Farm has two neighbouring wind farms in the local area.



Sapphire Wind Farm

Further details on the project are available on the project website:
sapphirowindfarm.com.au



Glen Innes Wind Farm

Further details on the project are available on the project website:
gleninneswindfarm.com.au



How can I find out more?

You can contact the project team at any time using the contact details below. We welcome comments and suggestions and are happy to talk through details of the project at any stage. If you would like to meet in person, please drop into the local shop front.

Shop front: 303C Grey Street,
Glen Innes NSW 2370
(Open hours: Monday –
Thursday 10am to 3:30pm).

Postal address: Suite 2, Level 23
201 Elizabeth Street
SYDNEY NSW 2000

info@whiterockwindfarm.com
Phone: 1800 859 660
www.whiterockwindfarm.com

WHITE ROCK
Wind Farm

WHITE ROCK
Solar Farm

info@whiterocksolarfarm.com
Phone: 1800 074 115
www.whiterocksolarfarm.com